

Aulika EVO

230V - 50 Hz

TOP HSC/RI



IT	Italiano
EN	English
FR	Français
DE	Deutsch
ES	Español

(IT)

SOMMARIO

Tav. 01	Telaio / Estetica
Tav. 02	Modulo cappuccinatore
Tav. 03	Impianto elettrico
Tav. 04	Elettrovalvole/Caldiaie
Tav. 05	Circuito Idrraulico - HSC
Tav. 06	Circuito Idrraulico - HSC RI
Tav. 07	Coperchio superiore/Contentitori
Tav. 08	Macinacaffe
Tav. 09	Motoriduttore
Tav. 10	Base macchina
Tav. 11	Gruppo caffè
Tav. 12	Kits macchina

(EN)

INDEX

Frame / aesthetics
Cappuccinatore module
Electric system
Solenoid Valves/Boilers
Hydraulic System - HSC
Hydraulic System - HSC RI
Top cover/Containers
Grinder
Gearmotor
Machine base
Coffee Group
Kits Coffee machine

(FR)

INDEX

Cadre / esthétique
Module Cappuccinatore
Installation électrique
Electrovannes/Chaudières
Circuit hydraulique - HSC
Circuit hydraulique - HSC RI
Couverture supérieure/Conteneurs
Moulin à café
Motoréducteur
Base de la machine
Groupe de café
Kits machine à café

(DE)

VERZEICHNIS

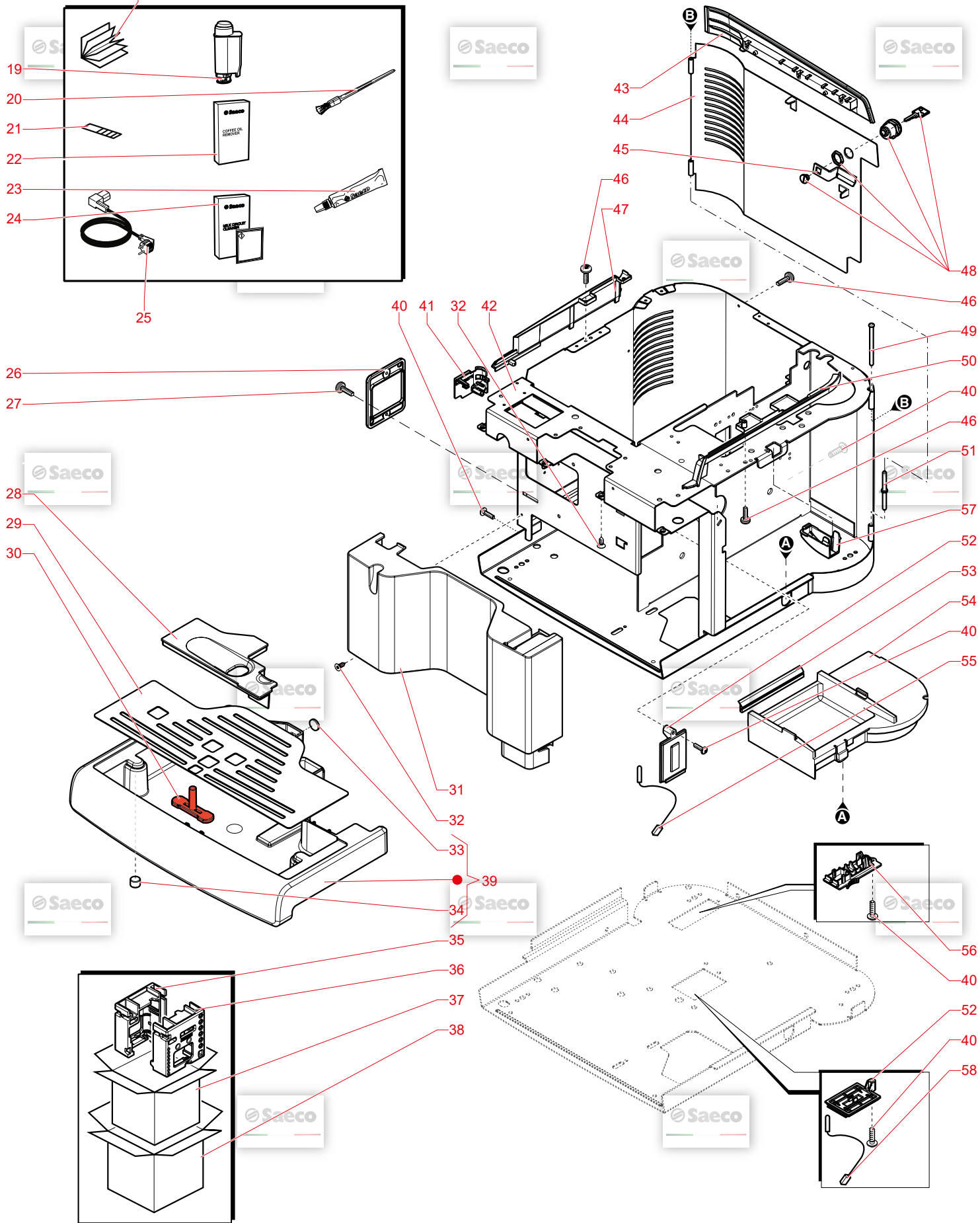
Rahmen / Ästhetik
Cappuccinatore modul
Schaltbrett
Solenoidventile/Kessel
Wasser Leitung - HSC
Wasser Leitung - HSC RI
Obere Abdeckung/Behälter
Kaffeemühle
Getriebemotor
Maschinenbasis
Kaffeegruppe
Kit Kaffeemaschine

(ES)

INDICE

Marco / estética
Modulo de cappuccinatore
Instalacion eléctrica
Válvula de solenoide/Calderas
Circuito idráulico - HSC
Circuito idráulico - HSC RI
Cubierta superior/Contenedores
Molinillo de café
Motorreductor
Base de la máquina.
Grupo de café
Kits máquina de café

1-2-3-4-5-6-7-8-9-10-11-12-13-14-15-16-17-18

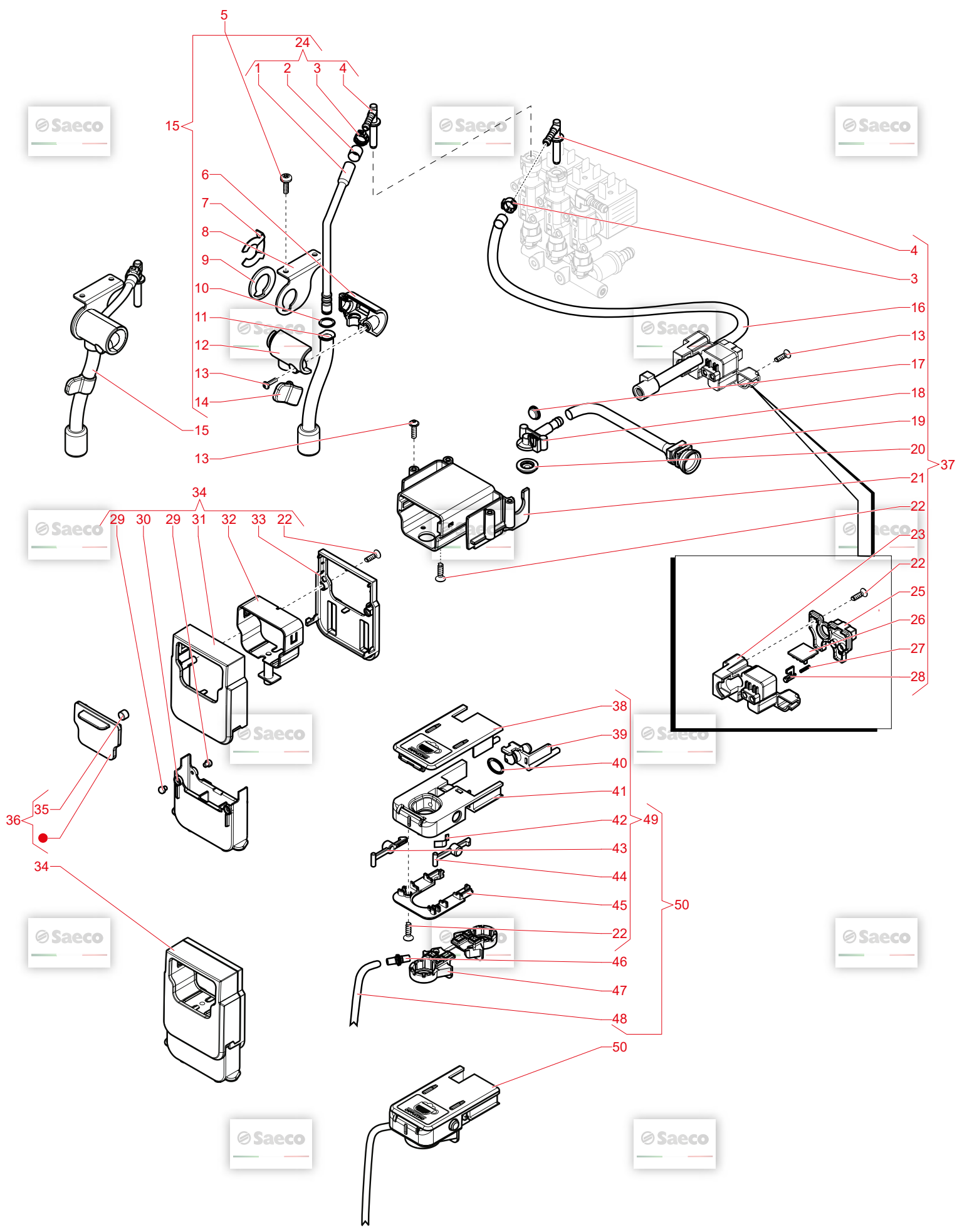


N.POSI	COD	I - DESCRIZIONE	UK - DESCRIPTION	F - DESCRIPTION	D - BEZEICHNUNG	E - DESCRIPCION
1	15005220	LIB.IST.SAE EVO.TOP RYLE/IT	MANUAL SAE EVO.TOP RYLE/IT	MANUAL SAE EVO.TOP RYLE/IT	MANUAL SAE EVO.TOP RYLE/IT	LIB.IST.SAE EVO.TOP RYLE/IT
2	15005221	LIB.IST.SAE EVO.TOP RYLE/GB	MANUAL SAE EVO.TOP RYLE/GB	MANUAL SAE EVO.TOP RYLE/GB	MANUAL SAE EVO.TOP RYLE/GB	LIB.IST.SAE EVO.TOP RYLE/GB
3	15005222	LIB.IST.SAE EVO.TOP RYLE/FR	MANUAL SAE EVO.TOP RYLE/FR	MANUAL SAE EVO.TOP RYLE/FR	MANUAL SAE EVO.TOP RYLE/FR	LIB.IST.SAE EVO.TOP RYLE/FR
4	15005223	LIB.IST.SAE EVO.TOP RYLE/DE	MANUAL SAE EVO.TOP RYLE/DE	MANUAL SAE EVO.TOP RYLE/DE	MANUAL SAE EVO.TOP RYLE/DE	LIB.IST.SAE EVO.TOP RYLE/DE
5	15005224	LIB.IST.SAE EVO.TOP RYLE/ES	MANUAL SAE EVO.TOP RYLE/ES	MANUAL SAE EVO.TOP RYLE/ES	MANUAL SAE EVO.TOP RYLE/ES	LIB.IST.SAE EVO.TOP RYLE/ES
6	15005225	LIB.IST.SAE EVO.TOP RYLE/PL	MANUAL SAE EVO.TOP RYLE/PL	MANUAL SAE EVO.TOP RYLE/PL	MANUAL SAE EVO.TOP RYLE/PL	LIB.IST.SAE EVO.TOP RYLE/PL
7	15005226	LIB.IST.SAE EVO.TOP RYLE/NL	MANUAL SAE EVO.TOP RYLE/NL	MANUAL SAE EVO.TOP RYLE/NL	MANUAL SAE EVO.TOP RYLE/NL	LIB.IST.SAE EVO.TOP RYLE/NL
8	15005227	LIB.IST.SAE EVO.TOP RYLE/PT	MANUAL SAE EVO.TOP RYLE/PT	MANUAL SAE EVO.TOP RYLE/PT	MANUAL SAE EVO.TOP RYLE/PT	LIB.IST.SAE EVO.TOP RYLE/PT
9	15005228	LIB.IST.SAE EVO.TOP RYLE/SK	MANUAL SAE EVO.TOP RYLE/SK	MANUAL SAE EVO.TOP RYLE/SK	MANUAL SAE EVO.TOP RYLE/SK	LIB.IST.SAE EVO.TOP RYLE/SK
10	15005229	LIB.IST.SAE EVO.TOP RYLE/RO	MANUAL SAE EVO.TOP RYLE/RO	MANUAL SAE EVO.TOP RYLE/RO	MANUAL SAE EVO.TOP RYLE/RO	LIB.IST.SAE EVO.TOP RYLE/RO
11	15005230	LIB.IST.SAE EVO.TOP RYLE/HU	MANUAL SAE EVO.TOP RYLE/HU	MANUAL SAE EVO.TOP RYLE/HU	MANUAL SAE EVO.TOP RYLE/HU	LIB.IST.SAE EVO.TOP RYLE/HU
12	15005231	LIB.IST.SAE EVO.TOP RYLE/CS	MANUAL SAE EVO.TOP RYLE/CS	MANUAL SAE EVO.TOP RYLE/CS	MANUAL SAE EVO.TOP RYLE/CS	LIB.IST.SAE EVO.TOP RYLE/CS
13	15005232	LIB.IST.SAE EVO.TOP RYLE/SE	MANUAL SAE EVO.TOP RYLE/SE	MANUAL SAE EVO.TOP RYLE/SE	MANUAL SAE EVO.TOP RYLE/SE	LIB.IST.SAE EVO.TOP RYLE/SE
14	15005233	LIB.IST.SAE EVO.TOP RYLE/RU	MANUAL SAE EVO.TOP RYLE/RU	MANUAL SAE EVO.TOP RYLE/RU	MANUAL SAE EVO.TOP RYLE/RU	LIB.IST.SAE EVO.TOP RYLE/RU
15	15005234	LIB.IST.SAE EVO.TOP RYLE/BG	MANUAL SAE EVO.TOP RYLE/BG	MANUAL SAE EVO.TOP RYLE/BG	MANUAL SAE EVO.TOP RYLE/BG	LIB.IST.SAE EVO.TOP RYLE/BG
16	15005235	LIB.IST.SAE EVO.TOP RYLE/TWN	MANUAL SAE EVO.TOP RYLE/TWN	MANUAL SAE EVO.TOP RYLE/TWN	MANUAL SAE EVO.TOP RYLE/TWN	LIB.IST.SAE EVO.TOP RYLE/TWN
17	15005236	LIB.IST.SAE EVO.TOP RYLE/CHN	MANUAL SAE EVO.TOP RYLE/CHN	MANUAL SAE EVO.TOP RYLE/CHN	MANUAL SAE EVO.TOP RYLE/CHN	LIB.IST.SAE EVO.TOP RYLE/CHN
18	15005237	LIB.IST.SAE EVO.TOP RYLE/KOR	MANUAL SAE EVO.TOP RYLE/KOR	MANUAL SAE EVO.TOP RYLE/KOR	MANUAL SAE EVO.TOP RYLE/KOR	LIB.IST.SAE EVO.TOP RYLE/KOR
19	21002660	ACC BRITA WATER FILTER 1UNIT (10 PENNELLO PER PULIZIA	ACC BRITA WATER FILTER 1UNIT (10 PINGEAU	ACC BRITA INTENZA 1 UNITE (10	ACC BRITA WATER FILTER 1UNIT (10 Reinigungspinsel	ACC BRITA WATER FILTER 1UNIT (10 PENNELLO PER PULIZIA
20	127390100	STICKER TEST DUREZZA ACQUA	STICKER FOR WATER HARDNESS TEST	TEST DE DURETE D'EAU	Teststreifen Für Wasserhärte	STICKER TEST DUREZZA ACQUA
21	0301_961	ACC COF OIL REMOVER 1UNIT CORE+W	ACC COF OIL REMOVER 1UNIT CORE+W	ACC COF OIL REMOVER 1UNIT CORE+W	ACC COF OIL REMOVER 1UNIT CORE+W	ACC COF OIL REMOVER 1UNIT CORE+W
22	21002663	TUBETTO GRASSO DI LUBRIFICAZIONE	KLUBERLUB NH1 11-222 TUBE 5GR.	TUBE DE GRAISSE SILICONE 5GR.	KLUBERLUB NH1 11-222 TUBE 5GR.	TUBETTO GRASSO DI LUBRIFICAZIONE
23	421946017941	ACC MILK CLEAN POW.1U DISPL CORE	ACC MILK CLEAN POW.1U DISPL CORE	PASTILLE NETTOYAGE CIRCUIT LAIT	ACC MILK CLEAN POW.1U DISPL CORE	ACC MILK CLEAN POW.1U DISPL CORE
24	21002662	CAVO AL.SCH.3X1 H05VV.F NER.L=12	BLACK POWER CABLE SCHUKO L=1200	CABLE ALIMENTATION	NETZANSCHLUßKABEL	CAVO AL.SCH.3X1 H05VV.F NER.L=12
25	183911050	COPERCHIO CONNETTORE NERO	BLK CONNECTOR LID	BLK CONNECTOR LID	BLK CONNECTOR LID	BLK CONNECTOR LID
26	421944062731	PANELVIT TCB 3.0X12 TORX BLACK	PANELVIT TCB 3.0X12 TORX BLACK	VIS TCB TORX	Spax-Schraube TCB 3.0X12 TORX sz	PANELVIT TCB 3.0X12 TORX NER
27	11443015	COP.VASCA REC.ACQ.RYL/IT INOX	BLACK DRIP TRAY COVER RYL	COUVERCLE BAC EGOUTTEMENT	Deckel sz Abtropfschale New Royal	COP.VASCA REC.ACQ.RYL NER.
28	17000982	GRIGLIA VASCA REC.ACQ.RYL/IT INOX	SB/SS DRIP TRAY GRATE RYL/IT	GRILLE BAC RECUIPE EAU INOX	SB/SS DRIP TRAY GRATE RYL/IT	GRIGLIA VASCA REC.ACQ.RYL/IT INOX
29	11029899	GALLEG.VASCA REC.ACQ.V2 RYL ROS.	RED FLOAT V2 FOR DRIP TRAY RYL	FLOTTEUR BAC EAUX USEES ROUGE	RED FLOAT V2 FOR DRIP TRAY RYL	GALLEG.VASCA REC.ACQ.V2 RYL ROS.
30	17000991	COPANT.CARC.RYLOIT VERN.NER.C	BLK/P FRONT CASING COVER RYL/IT			
31	11037043	VITE TSP 3.5X9.5 DIN7982 TORX IN	SCREW TSP TORX 10 AB 3.5X9.5 SHE	MAGNET D=9.5 X H=1.5	Senkkopfschraube 3.5 x 9.5	VITE TSP 3.5X9.5 DIN7982 TORX IN
32	129535721	MAGNETE X GALLEGGIANTE SUPERAUT.	MAGNET FOR FLOAT SUPERAUT.	AXIME BAC A MARC MAGIC	Magnetscheibe d=9,5mm h=1,5mm	MAGNETE X GALLEGGIANTE SUPERAUT.
33	9991_093	INS SX SCATOLA RYLO-E PS-E	PS-E RIGHT INS FOR BOX RYLO-E	FLOTTEUR MAGNETIQUE		
34	9161_111	INS DX SCATOLA RYLO-E PS-E	PS-E LEFT INS FOR BOX RYLO-E			
35	56A000900	SCAT.AVANA RYLO SAE AULIKA	HAVANA BOX RYLO SAE AULIKA	BOITE D'EMBALLAGE INTERNE	HAVANA BOX RYLO SAE AULIKA	SCAT.AVANA RYLO SAE AULIKA
36	56A000900	AS.VASCA REC.ACQ.RYL NER.D/VERN.	UNPAINTED DRIP TRAY RYL ASSY.V2			
37	130001327	VITE TCBR 3.5X12 PLAST.ZN-N	SCREW TCBR TORX 10 3.5X12 PLAST.	VIS TCBR TORX 10 3.5X12 PLASTZN	TORXSCHRAUBE 3.5X12	VITE TCBR 3.5X12 PLAST.ZN-N
38	11036904	PROT.TUBO VAP.RYL NER.	BLACK STEAM TUBE PROTECTION RYL	PROTECTION TUBE VAPEUR	BLACK STEAM TUBE PROTECTION RYL	BLACK STEAM TUBE PROTECTION RYL
39	12000450	AS.CARC.V4 RYLO/IT ACC.VERN.NER.	BLK STEEL CASING V4 RYLO/IT ASSY	BLK STEEL CASING V4 RYLO/IT ASSY	BLK STEEL CASING V4 RYLO/IT ASSY	AS.CARC.V4 RYLO/IT ACC.VERN.NER.
40	17000779	INS.SPORTELO BLK RYLE	BLK CASING CLOSING INSERT RYL/E	BLK CASING CLOSING INSERT RYL/E	BLK CASING CLOSING INSERT RYL/E	INS.SPORTELO BLK RYLE
41	11034801	AS.SPORT.CARC.RYLE ACC.NER.	SIDE DOOR RYLE ACC.BLK.ASSY	SIDE DOOR RYLE ACC.BLK.ASSY	SIDE DOOR RYLE ACC.BLK.ASSY	AS.SPORT.CARC.RYLE ACC.NER.
42	11036713	STAFFA SERRATURA SPORT.CARC.RYLO	STEEL CASING DOOR LOCK BRACKET R	PENE DE SERRURE	STEEL CASING DOOR LOCK BRACKET R	STAFFA SERRATURA SPORT.CARC.RYLO
43	11036748	VITE TCB B 3.5X9.5 LAMIERA ZN-N	SCREW TCB TORX B 3.5X9.5 SCHEET	VIS TCB B 3.5X9.5 LAMIERA ZN-N	TORXSCHRAUBE 3.5X9.5	VITE TCB B 3.5X9.5 LAMIERA ZN-N
44	12001622	INS.CHIUSSURA SX BLK CARC. RYLO/E	BLK CASING LEFT CLOSING INSERT R	BLK CASING LEFT CLOSING INSERT R	BLK CASING LEFT CLOSING INSERT R	INS.CHIUSSURA SX BLK CARC. RYLO/E
45	11036714	SERRATURA MERONI.337	LOCK MERONI 337	SERRURE MERONI 337	Türschloß Meroni 337	SERRATURA MERONI.337
46	0301_019	SPINA SPORT.SUPERAUT.OT/NIK	NIK/BRASS PIN FOR DOOR SUPERAUT.	AXE DE PORTE	Scharnierbolzen oben	SPINA SPORT.SUPERAUT.OT/NIK
47	11036715	INS.CHIUSSURA DX BLK CARC. RYLO/E	BLK CASING RIGHT CLOSING INSERT	BLK CASING RIGHT CLOSING INSERT	BLK CASING RIGHT CLOSING INSERT	INS.CHIUSSURA DX BLK CARC. RYLO/E
48	0301_020	SPINA SPORT.SUPERAUT.OT/NIK	NIK/BRASS PIN FOR DOOR SUPERAUT.	AXE DE PORTE	Scharnierbolzen unten	SPINA SPORT.SUPERAUT.OT/NIK
49	17000240	INS.PIAS.MONTAG RYL.GRI.	GREY MOUNTING PLATE INSERT RYL	INSERT PLAQUE DE MONTAGE	GREY MOUNTING PLATE INSERT RYL	INS.PIAS.MONTAG RYL.GRI.
50	9161_140	GUARNIZIONE X PIASTRA GRUPPO	SEAL FOR UNIT PLATE	GARNITURE GROUPE CAFE	Dichtung Brühgruppschale MA, R	GUARNIZIONE X PIASTRA GRUPPO
51	0301_041_150	PIAS.SUPP.GRUP.ROYAL.GRI.	GREY BREW UNIT SUPPORT PLATE ROY	PLAQ.GROUPE CAFE GRISE	Schublaube Brühgruppe MA, R	PIAS.SUPP.GRUP.ROYAL.GRI.
52	178000442	AS.CONN.2P.SENS.REED FONDI CST	2POLES CONNECT.SENSOR REED DUMP	CONNECTEUR 2 POLES	2POLES CONNECT.SENSOR REED DUMP	AS.CONN.2P.SENS.REED FONDI CST
53	178000828	TAPPO FONDO CARC.RYLO NER.	BLACK CASING BOT TOM PLUG RYLO	BOUCHON FOND DE CARCASSE	BLACK CASING BOT TOM PLUG RYLO	TAPPO FONDO CARC.RYLO NER.
54	17001874	PROT.MICRO RYL UL NER.	BLACK MICROSWITCH PROTECTION RYL			PROT.MICRO RYL UL NER.
55	421946004691	AS.CONN.3P.SENS.REED CAS.FOND.V2	3P.CONN.DUMP BOX REED SENS.V2 RY	CONNECTEURS 3 POLES	3P.CONN.DUMP BOX REED SENS.V2 RY	AS.CONN.3P.SENS.REED CAS.FOND.V2

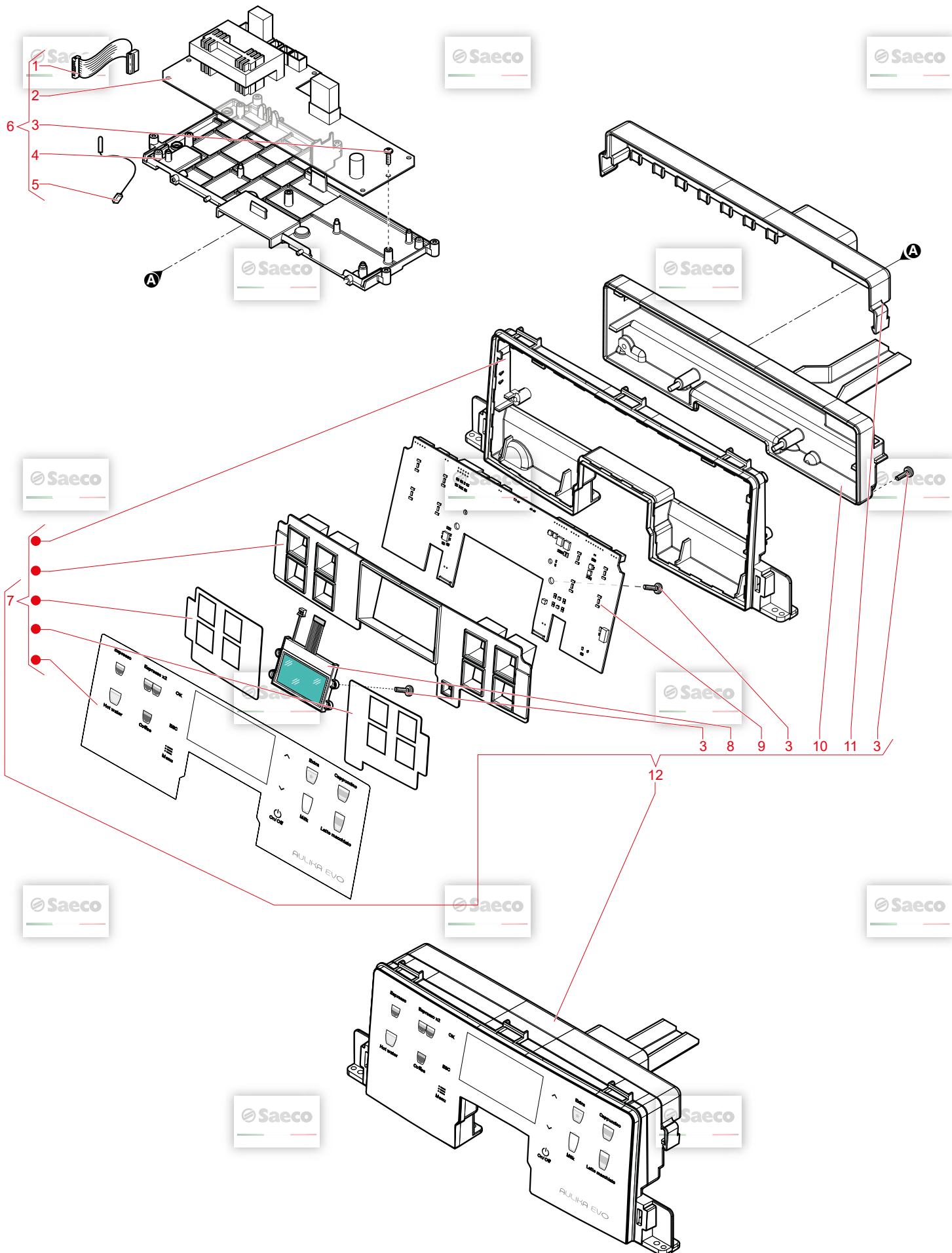
NOTE

IT GB FR DE ES PL NL SK CS SE RU BG TWN CHN KR

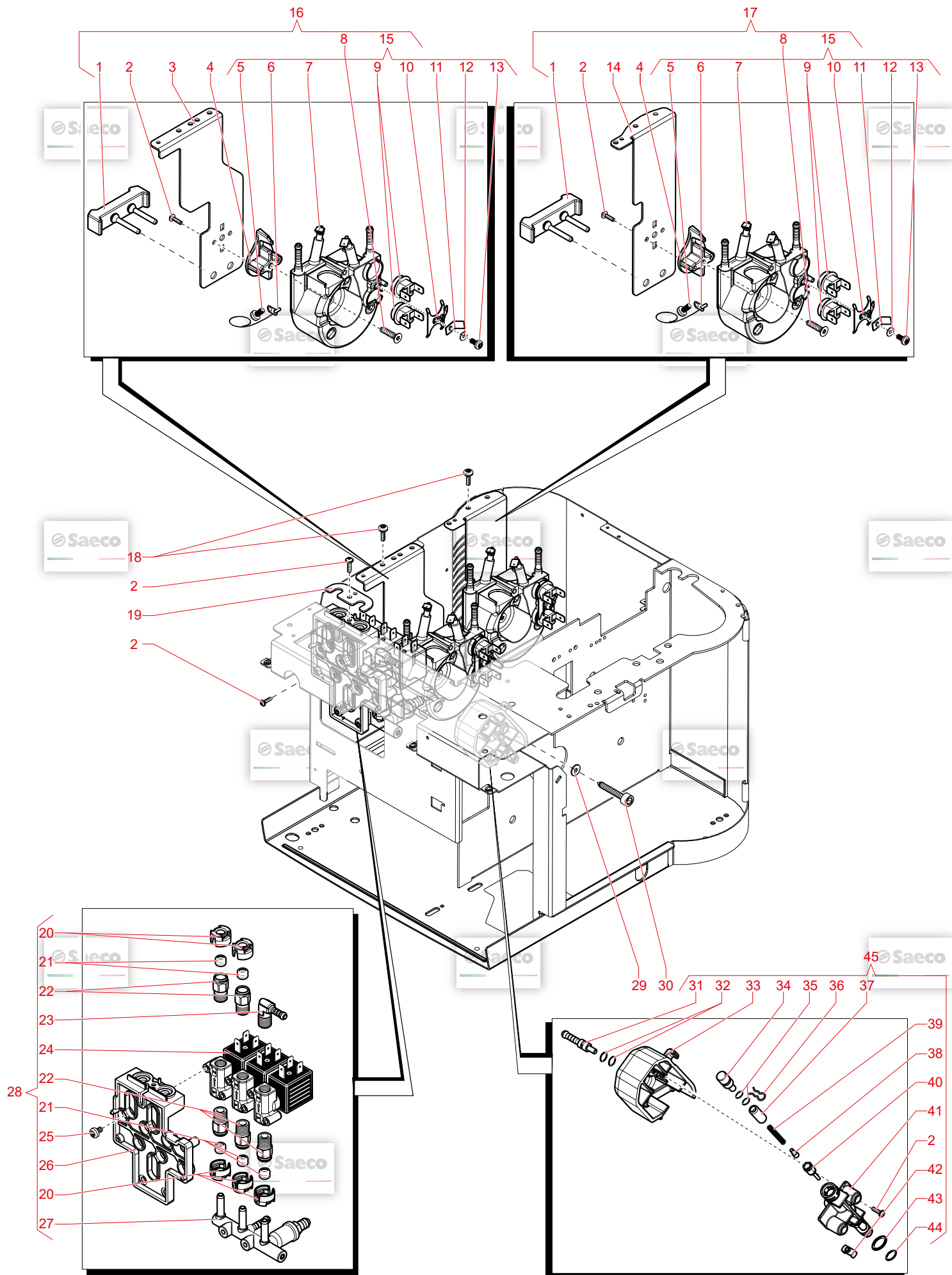


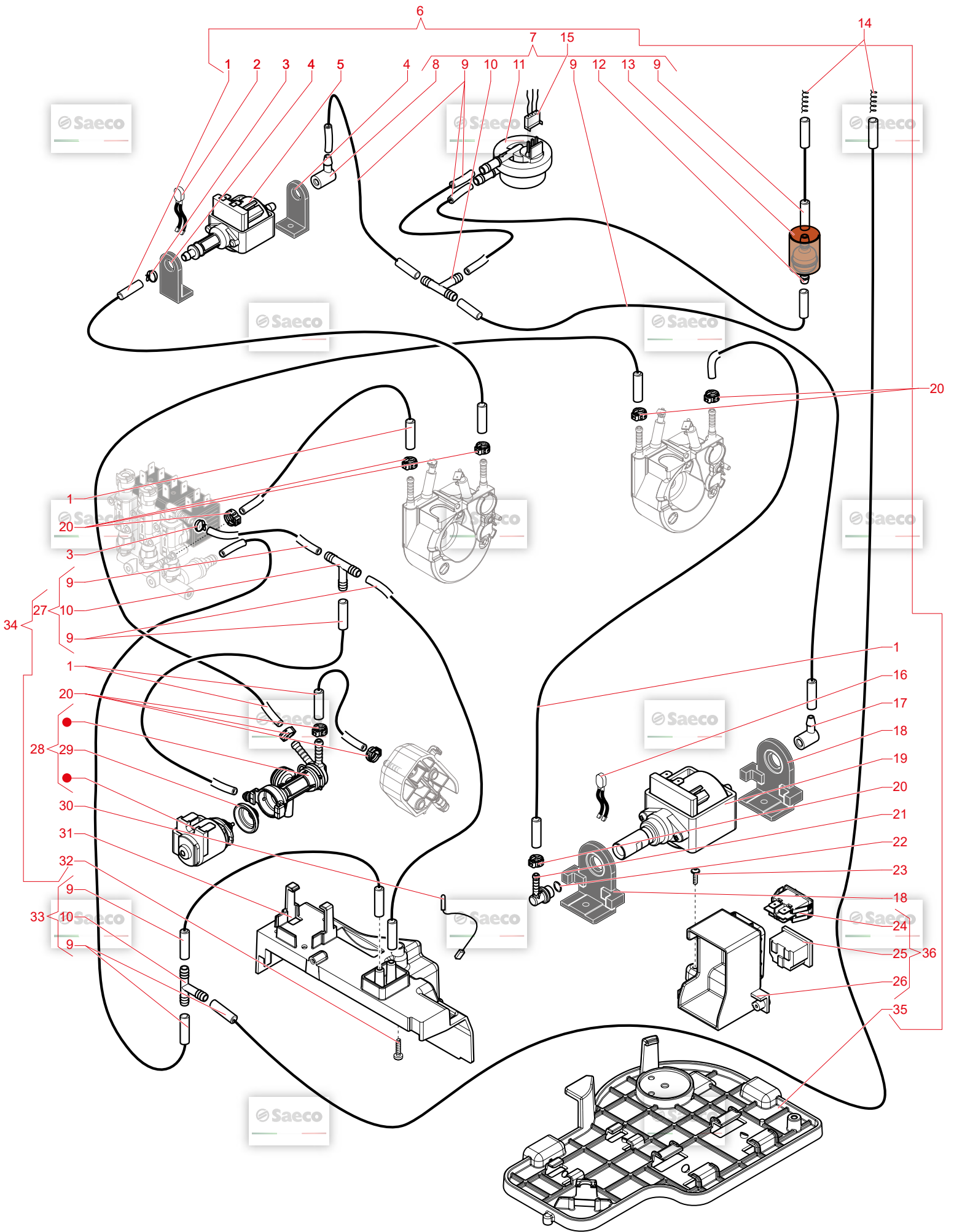
N.POSI	COD	I - DESCRIZIONE	UK - DESCRIPTION	F - DESCRIPTION	D - BEZEICHNUNG	E - DESCRIPCION
1	11022989	TUBO EROG.VAP.MDS SILIC.NER.	BLACK SILIC.STEAM DISPENSER TUBE	BLACK SILIC.STEAM DISPENSER TUBE	Dampfrohr schwarz Silikon	BLACK SILIC.STEAM DISPENSER TUBE
2	11025683	TUBO DI=9.5 SP=0.30 L=10 NER.	BLACK TUBE DI=9.5 SP=0.30 L=10	BLACK TUBE DI=9.5 SP=0.30 L=10	BLACK TUBE DI=9.5 SP=0.30 L=10	BLACK TUBE DI=9.5 SP=0.30 L=10
3	12000892	FASCETTA OETIKER D=9.5 16700004	OETIKER CLAMP D=9.5 16700004	AGRAFES OETIKER D=9.5 16700004	OETTINGERKLEIMME D=9.5	FASCETTA OETIKER D=9.5 16700004
4	17002197	RAC.TUBO VAP/CAPPUC.V4 RYL NER.	BLACK CAPPUCIN/STEAM TUBE CONNEC			
5	12001622	VITE TCB B 3.5X9.5 LAMIERA ZN-N	SCREW TCB TORX B 3.5X9.5 SCHEET	VIS TCB B 3.5X9.5 LAMIERA ZN-N	TORXSCHRAUBE 3.5X9.5	VITE TCB B 3.5X9.5 LAMIERA ZN-N
6	17000672	SUPP.POST.TUBO VAP.RYL NER.	BLACK REAR STEAM TUBE SUPPORT RY	SUPPORT ARRIERE TUBE VAPEUR	BLACK REAR STEAM TUBE SUPPORT RY	SUPP.POST.TUBO VAP.RYL NER.
7	NF11.084	MOLLA A FORCELLA ACC.FOSF.	PHOSPH/STEEL FOLK SPRING	RESSORT A FOURCHE	Klemmfeder HWD - Rohr Incantio, D	MOLLA A FORCELLA ACC.FOSF.
8	17000815	STAFFA SUPP.TUBO VAP.RYL ACC.	STEEL STEAM TUBE SUPPORT BRACKET	EQUERRE A FOURCHE	STEEL STEAM TUBE SUPPORT BRACKET	STAFFA SUPP.TUBO VAP.RYL ACC.
9	11001624	RONDELLA TUBO VAP.P0049 NER.	BLACK STEAM TUBE WASHER P0049	RONDELLE DE BLOCAGE TUBE VAPEUR	Unterlegscheibe zu Dampfrohr	RONDELLA TUBO VAP.P0049 NER.
10	140321961	OR 2031 TERMOIL	O-RING 2031 TERMOIL	JOINT 2031	O-Ring 2031 EPDM	OR 2031 TERMOIL
11	11029670	TUBO VAP.RYLO OT/CHROM.TF	TF/CHROM.STEAM TUBE RYLO	TUYAU VAPEUR	TF/CHROM.STEAM TUBE RYLO	TF/CHROM.STEAM TUBE RYLO
12	17001437	SUPP.ANT.TUBO VAP.RYL NER.	BLACK FRONT STEAM TUBE SUPPORT R	SUPPORT AVANT TUBE VAPEUR	BLACK FRONT STEAM TUBE SUPPORT R	SUPP.ANT.TUBO VAP.RYL NER.
13	12000450	VITE TCBR 3.5X12 PLAST.ZN	SCREW TCBR TORX 10 3.5X12 PLAST.	VIS TCBR TORX 10 3.5X12 PLAST.ZN	TORXSCHRAUBE 3.5X12	VITE TCBR 3.5X12 PLAST.ZN
14	17001574	IMPUGN.TUBO VAP.RYLO NER.	BLACK STEAM TUBE HANDGRIP RYLO	POIGNEE TUBE VAPEUR NOIRE	BLACK STEAM TUBE HANDGRIP RYLO	IMPUGN.TUBO VAP.RYLO NER.
15	10174116	AS.TUBO VAP.V3 RYL/T OT/TEA OT/C	TF/CHROM.STEAM TUBE V3 RYL/T ASS	AS.TUBE VAP.V3 RYL/T OT/TEA OT/C	TF/CHROM.STEAM TUBE V3 RYL/T ASS	AS.TUBO VAP.V3 RYL/T OT/TEA OT/C
16	20007031	KIT RAC.USCITA VAP.CAPPUC.RYL NE	BLK CAPPUC.OUTPUT STEAM CONNECT.	KIT RACCORD DE SORTIE VAPEUR	KIT RAC.USCITA VAP.CAPPUC.RYL NE	KIT RAC.USCITA VAP.CAPPUC.RYL NE
17	11014016	INS.MAGNETE MYB9 INOX	SS INSERT FOR MAGNET MYB9	INSERTION MAGNET	Aufnahme Magnet	SS.INSERT FOR MAGNET MYB9
18	17000614	TUBO EROG.CAF.RYL NER.	BLACK COFFEE DISPENSER TUBE RYL	TUBE EROGATION CAFE	Kaffeerauslaufrohr schwarz	TUBO EROG.CAF.RYL NER.
19	17000614	RAC.INGRES.CAF.EROG.RYL NER.	BLACK DISPENSER COFF.INLET CONNE	RACCORD PASSAGE CAFE	Raccord schwarz Kaffeezulauf	RAC.INGRES.CAF.EROG.RYL NER.
20	17000337	GUARN.EROG.CAF.RYL NER.	BLACK SEAL FOR COFFEE DISPENSER	CARNITURE EROGATION CAFE	Dichtung schwarz Kaffeerauslauf	GUARN.EROG.CAF.RYL NER.
21	17000257	SUPP.EROG.CAF.RYL NER.	BLACK COFFEE DISPENSER SUPPORT R	SUPPORT EROGATION CAFE	BLACK COFFEE DISPENSER SUPPORT R	SUPP.EROG.CAF.RYL NER.
22	12000895	VITE TSP 3X10 PLAST.INOX	SCREW TSP TORX 10 3X10 PLAST.SS	VIS TSP 3X10 PLAST.INOX	TORXSCHRAUBE 3X10	SCREW TSP TORX 10 3X10 PLAST.SS
23	12000339	SUPP.SCHEDA CAPPUC.RYL NER.	BLACK CAPPUCINATORE BOARD SUPPO	SUPPORT PLATINE CAPPUC.NOIR	BLACK CAPPUCINATORE BOARD SUPPO	SUPP.SCHEDA CAPPUC.RYL NER.
24	20007030	KIT TUBO USCITA VAP.RYL NER.	BLACK OUTPUT STEAM TUBE KIT RYL	KIT TUBE VAPEUR	BLACK OUTPUT STEAM TUBE KIT RYL	KIT TUBO USCITA VAP.RYL NER.
25	17000348	COP.SUPP.SCHEDA CAPPUC.RYL NER.	BLK CAPPUCINATORE BOARD SUPP.CO	CORPS SUPPORT PLATINE CAPPUC. NO	BLK CAPPUCINATORE BOARD SUPP.CO	COP.SUPP.SCHEDA CAPPUC.RYL NER.
26	11025772	SCHEDA CAPPUC.RYL	CAPPUCINATORE BOARD RYL	PLATINE CAPPUCINATORE	SCHEDA CAPPUC.RYL	SCHEDA CAPPUC.RYL
27	17000019	MOLLA INS.MICRO CARAF.MYB9 ACC.	SS CARAFE MICRO INSERT SPRING MY	RESSORT INSERT	Feder zu Mikroschalter Karaffe	MOLLA INS.MICRO CARAF.MYB9 ACC.
28	17000421	INS.PRESENZA CAPPUC.RYL NER.	BLACK CAPPUCINATORE PRESENCE IN	INSERT PRESENCE CAPPUCINATORE	BLACK CAPPUCINATORE PRESENCE IN	INS.PRESENZA CAPPUC.RYL NER.
29	11013085	PATTINO EROG.CAF.MYB9 BIA.	WHITE COFFEE DISPENSER SLIDER MY	PATIN EROGATION CAFE	Gleitstück im Auslauf	PATTINO EROG.CAF.MYB9 BIA.
30	17000246	PARTE MOBILE EST.EROG.CAF.RYL NE	BLACK EXT.MOBILE PART COF.DISPEN	BLACK EXT.MOBILE PART COF.DISPEN	BLACK EXT.MOBILE PART COF.DISPEN	PARTE MOBILE EST.EROG.CAF.RYL NE
31	11037042	COP.ANT.EROG.CAF.RYL VERN.NER.	BLK FRONT COF.DISPENSER COVER	CORPS ARRIERE EROGATION CAFE	BLACK REAR COVER COFFEE DISPENSE	COP.ANT.EROG.CAF.RYL VERN.NER.
32	17000251	CORPO INT.EROG.CAF.RYL NER.	BLACK INNER BODY COFFEE DISPENS	CORPS ARRIERE EROGATION CAFE	BLACK INNER BODY COFFEE DISPENS	CORPO INT.EROG.CAF.RYL NER.
33	17000248	COP.POS.EROG.CAF.RYL NER.	BLACK REAR COVER COFFEE DISPENSE	BLK COFFEE DISPENSER RYL ASSY	BLACK REAR COVER COFFEE DISPENSE	COP.POS.EROG.CAF.RYL NER.
34	11036787	AS.EROG.CAF.RYL BLK	MAGNET FOR FLOAT SUPERAUT.	FLOTTEUR MAGNETIQUE	MAGNET	AS.EROG.CAF.RYL BLK
35	9161.111	MAGNETE X GALLEGGIANTE SUPERAUT.				MAGNETE X GALLEGGIANTE SUPERAUT.
36	11037041	AS.COP.SUPP.EROG.CAF.RYL/T VER	AS.COP.SUPP.EROG.CAF.RYL/T VER			AS.COP.SUPP.EROG.CAF.RYL/T VER
37	11031417	AS.SUPP.EROG.CAF.V3 RYL/T OT/TEA	BLK UPPER CAPPUC.LID LASER.RYL	BLK UPPER CAPPUC.LID LASER.RYL	AS.SUPP.EROG.CAF.V3 RYL/T OT/TEA	AS.SUPP.EROG.CAF.V3 RYL/T OT/TEA
38	17000498	COP.SUPP.CAPPUCINAT.RYL NER.LASE	BLACK CAPPUC.INPUT MILK CONNECTO	RACCORD ASPIRATION LAIT	BLACK CAPPUC.INPUT MILK CONNECTO	RAC.INGRES.LATTE CAPPUC.RYL NER.
39	17000785	RAC.INGRES.LATTE CAPPUC.RYL NER.	OR RING 106 SILICONE	JOINT 106	O-Ring 106 SV. MC. P35	OR 106 SILICONE
40	NM01.028	OR 106 SILICONE	BLACK LEFT ENTRY CAPPUCINAT.CAS	CORPS CAPPUCINATORE	BLACK LEFT ENTRY CAPPUCINAT.CAS	CORPO CAPPUC.INGRES.SX RYL NER.
41	17000338	CORPO CAPPUC.INGRES.SX RYL NER.	SS CAPPUCINATORE INSERT SPRING	RESSORT INOX BLOCAGE INSERT CAPP	MOLLA INS.BLOCCAG.CAPPUC.RYL INO	MOLLA INS.BLOCCAG.CAPPUC.RYL INO
42	17000382	INS.SX.BLOCCAG.CAPPUC.RYL GRI.	GREY LEFT CAPPUCINATORE INSERT	INSERT DROIT BLOCAGE CAPPUCIN	INS.DX.BLOCCAG.CAPPUC.RYL GRI.	INS.SX.BLOCCAG.CAPPUC.RYL GRI.
43	17000389	INS.DX.BLOCCAG.CAPPUC.RYL GRI.	GREY RIGHT CAPPUCINATORE INSERT	INSERT DROIT BLOCAGE CAPPUCIN	INS.DX.BLOCCAG.CAPPUC.RYL GRI.	INS.DX.BLOCCAG.CAPPUC.RYL GRI.
44	17000402	COP.INF.CAPPUC.V2 RYL NER.	BLK LOWER CAPPUCINATORE LID V2	BLK LOWER CAPPUCINATORE LID V2	BLK LOWER CAPPUCINATORE LID V2	INS.DX.BLOCCAG.CAPPUC.RYL GRI.
45	42194178272	INS.RAC.TUBO ASPIR.LATTE V2 RYL	BLK MILK INTAKE TUBE CONNECT INS	INSERT RACCORD TUBE ASPIRATION L	Einsatz zu Raccord Milchrohr sch	INS.RAC.TUBO ASPIR.LATTE V2 RYL
46	17001362	INS.RAC.TUBO ASPIR.LATTE V2 RYL	MILK INTAKE+OUTLET CONNECT.RYL V	MILK INTAKE+OUTLET CONNECT.RYL V		INS.RAC.TUBO ASPIR.LATTE V2 RYL
47	421944059361	RAC.TUBO ASPIR.+USCITA LATTE RYL	TUBE SILICONE 3.5X6 L=500MM	TUBE SILICONE 3.5X6 L=500MM		MILK INTAKE+OUTLET CONNECT.RYL V
48	11029672	TUBO SILICONE 3.5X6 L=500MM TAGL	BLK CAPPUCINATORE S/SCR.V2 RYLO	CAPPUCINATOR NOIR V2 HSC		TUBO SILICONE 3.5X6 L=500MM TAGL
49	421941260042	AS.CAPPUC.V2 RYL/O NER.SER.	BLK CAPPUCINATORE S/SCR.V2 RYLO	CAPPUCINATOR NOIR V2 HSC		BLK CAPPUCINATORE S/SCR.V2 RYLO
50	421946032811	KIT CAPPUCINATORE NERO	KIT BLK CAPPUCINATORE NERO	KIT CAPPUCINATORE NOIR		KIT CAPPUCINATORE NERO



N.POSI	COD	I - DESCRIZIONE	UK - DESCRIPTION	F - DESCRIPTION	D - BEZEICHNUNG	E - DESCRIPCION	NOTE
1	421946000581	FLAT CABLE 14P.CPU-PWR V2 RYL	14P.FLAT CABLE CPU-PWR V2 RYL	PWR BOARD RYL/RYLO V2 230V	PWR BOARD RYL/RYLO V2 230V	PWR BOARD RYL/RYLO V2 230V	NOTE
2	421941307761	PWR BOARD RYL/RYLO V2 230V	PWR BOARD RYL/RYLO V2 230V	VIS TCBR TORX 10 3.5X12 PLASTZN	TORXSCHRAUBE 3.5X12	VITE TCBR 3.5X12 PLASTZN-N	230V
3	12000450	VITE TCBR 3.5X12 PLASTZN-N	SCREW TCBR TORX 10 3.5X12 PLAST	SUPPLATINE PUISSANCE NOIR	BLACK PWR BOARD SUPPORT RYL	SUPP SCHEDA PWR RYL NER	
4	17000275	SUPP SCHEDA PWR RYL NER	BLACK PWR BOARD SUPPORT RYL	CONNECTEUR 2 POLES	2POLES CONNECT.SENSOR REED DUMP	2POLES CONNECT.SENSOR REED DUMP	
5	17800442	AS.COMN.2P-SENS.REED FONDI CST	2POLES CONNECT.SENSOR REED DUMP	EL.PARTS RYL/E 230/50 ASSY	EL.PARTS RYL/E 230/50 ASSY	AS.PARTI EL. RYL/E 230/50	
6	11036743	AS.PANNELLO FRONTALINO RYL/E	AS.PANNELLO FRONTALINO RYL/E	DISPLAY 160X80 BLANC	WHITE DISPLAY 160X80	DISPLAY 160X80 BIANCO	230V
7	83A027100	AS.PANNELLO FRONTALINO RYL/E	AS.PANNELLO FRONTALINO RYL/E	ASSY CPU+FW_AULIKA_EVO	ASSY CPU+FW_AULIKA_EVO	ASS. CPU+FW_AULIKA_EVO	
8	12001779	ASS. CPU+FW_AULIKA_EVO	ASSY CPU+FW_AULIKA_EVO	FRONT CONTROL PANEL RYL/E ASS Y	FRONT CONTROL PANEL RYL/E ASS Y	AS.FRONTALINO COMANDI RYL/E	
9	11037022	COP.INF.FRONT.COMANDI RYL/E	CONTROL PANEL INF.COVER RYL/E				
10	11037021	COP.SUP.FRONT.COMANDI RYL/E	CONTROL PANEL SUP.COVER RYL/E				
11	11037021	AS.FRONTALINO COMANDI RYL/E	FRONT CONTROL PANEL RYL/E ASS Y				
12	11036746	AS.FRONTALINO COMANDI RYL/E	FRONT CONTROL PANEL RYL/E ASS Y				
				C0103X00	11/02/2019	Aulika EVO TOP HSC/RI	

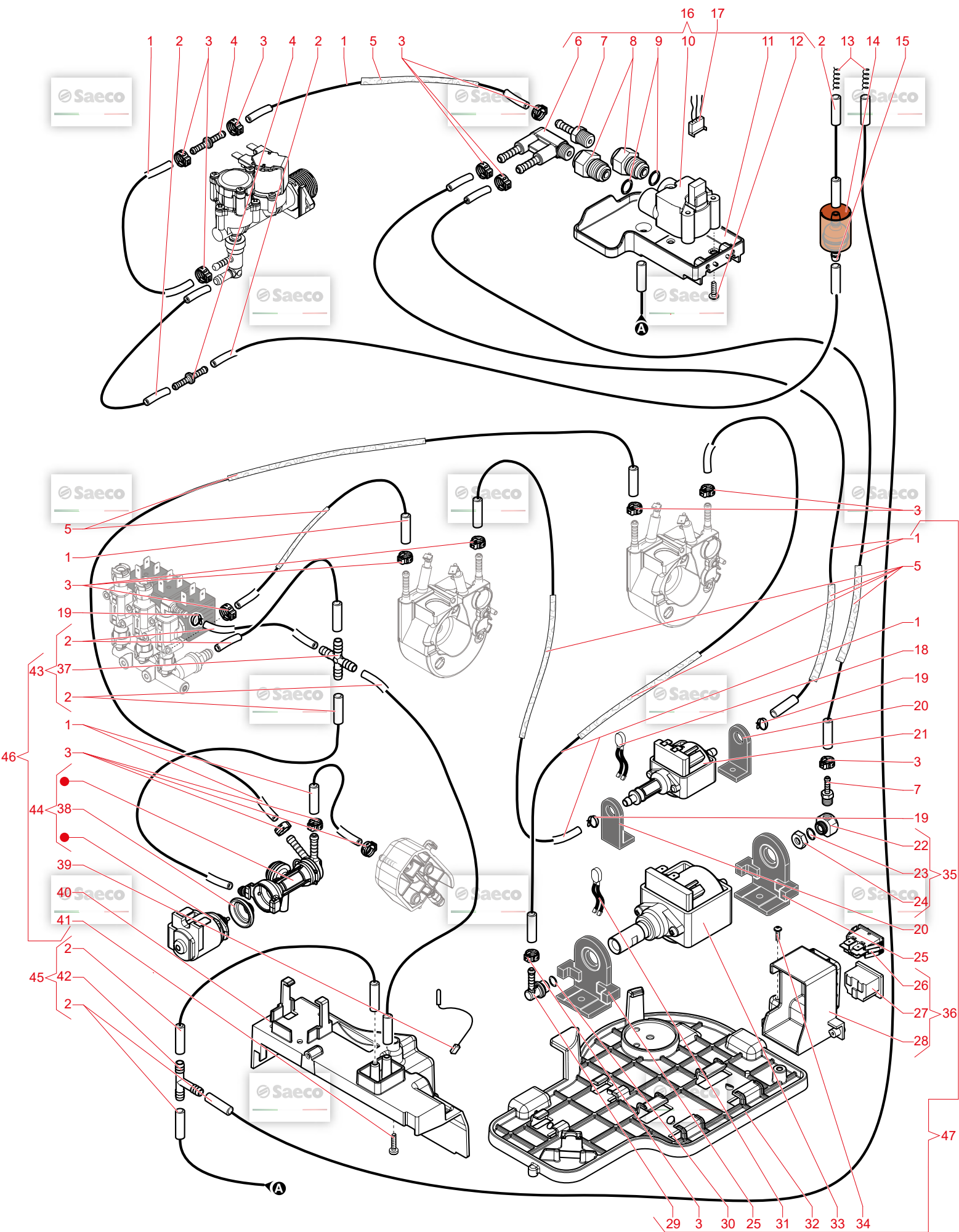


N.POSI COD	I - DESCRIZIONE	UK - DESCRIPTION	F - DESCRIPTION	D - BEZEICHNUNG	E - DESCRIPCION
1	17000471	BLACK BOILER ANTIVIBRATION RYL	ANTIVIBRATION CHAUDIERE	BLACK BOILER ANTIVIBRATION RYL	ANTIVIBRANTE CALD.RYL NER.
2	12000450	SCREW TCBR TORX 10 3.5X12 PLAST.	VIS TCBR TORX 10 3.5X12 PLASTZN	SUPP.CALD.TUB.VAP.V2 RYL ACC.	SUPP.CALD.TUB.VAP.V2 RYL ACC.
3	421941276892	STEEL SLIM TUB. BOILERS SUPPORT V2	NEU SLIM TUB. BOILERS SUPPORT V2	NEU SLIM TUB. BOILERS SUPPORT V2	NEU SLIM TUB. BOILERS SUPPORT V2
4	421944057621	NEU SLIM TUB. BOILERS SUPPORT V2	NEU SLIM TUB. BOILERS SUPPORT V2	NEU SLIM TUB. BOILERS SUPPORT V2	NEU SLIM TUB. BOILERS SUPPORT V2
5	129573402	SCREW TAPIT M4X10 DIN 7985 GALV	SENSSEUR DE TEMPERATURE	Linsenschraube M4X10 DIN7985, ve	VITE TCB PHISW 4X10 UNI 8112 ZNP
6	190800100	TEMPERATURE SENSOR NTC UL L=280M	TUB BOILER XS4 1300W 230V ASSY.	SENSSEUR NTC UL L=280 mm	SENSORE TEMPERATURA NTC UL L=280
7	421944024121	TUB BOILER XS4 1300W 230V ASSY.	CHAUDIERE TUBULAIRE NIE XS4 1300	TUB BOILER XS4 1300W 230V ASSY.	TUB BOILER XS4 1300W 230V ASSY.
8	12001280	SCREW TSP TORX 10 5X20 PLAST.ZN-	VIS TSP 5X20 PLAST.ZN-B	TORX SCHRAUBE 5X20	VITE TSP 5X20 PLAST.ZN-B
9	12001033	THERMOSTAT ONE SHOT 190°	THERMOSTAT ONE SHOT 190°	THERMOSTAT ONE SHOT	TERMOSTATO ONE SHOT 190°
10	11001751	TUB BOILER V3 UPPER THERM. FIXING	RESSORT V3 UPPER THERM. THERMOSTAT	Haltbügel mit PE	MOLLA FERM. TERMOS. SUP.CALD. TUB.V
11	124390520	BRASS BEINT FASTON 45° 6.3X0.8	RACCORD DE PROTECTION 45° 6.3X0.	Schutzleiterschleuß 45°	FASTON PIEGATO 45° 6.3X0.8 OTTON
12	128310402	GALV WASHER UNI 8842 A4	RONDELLE UNI 8842 A4 ZINC	FÄCHERSCHRAUBE A4	ROSETTA UNI 8842 A4 ZINC.
13	12001715	SCREW TCB TORX 20 M4X8 AUTOFORMI	VIS CB TORX 20 M4X8 AUTOFORMING	TORX SCHRAUBE 4X8	SCREW TCB TORX 20 M4X8 AUTOFORMI
14	17000163	STEEL COFFEE TUBOL. BOILER SUPPOR	SUPPORT CHAUD / TUBE CAFE	STEEL COFFEE TUBOL. BOILER SUPPOR	SUPP.CALD.TUB.CAF.RYL/T ACC.
15	421941229822	SLIM T.CHAUD V2 C2 T190-190° 1300	CHAUDIERE SLIM V2 T190-190° 1300	AS.CALD.T.SLIM V2 C2 T190-190°1	AS.CALD.T.SLIM V2 C2 T190-190°1
16	421941227702	AS.GEN.CALD.TUB.VAP.V2 RYL 230V ASS	CHAUDIERE TUBULAIRE VAPEUR COMPL	AS.GEN.CALD.TUB.VAP.V2 RYL 230V ASS	AS.GEN.CALD.TUB.VAP.V2 RYL 230V
17	421941227692	AS.GEN.CALD.TUB.CAF.V2 RYL/T 230	CHAUDIERE TUBULAIRE CAFE COMPLET	AS.GEN.CALD.TUB.CAF.V2 RYL/T 230	AS.GEN.CALD.TUB.CAF.V2 RYL/T 230
18	12001622	VITE TCB B 3.5X9.5 SCHEET	VIS TCB B 3.5X9.5 LAMIERA ZN-N	TORX SCHRAUBE 3.5X9.5	VITE TCB B 3.5X9.5 LAMIERA ZN-N
19	17000428	PIAS.BLOCCAG.RACCORDI RYL ACC.	PLAQUE DE BLOCAGE	STEEL CONNECTORS FIXING PLATE RY	PIAS.BLOCCAG.RACCORDI RYL ACC.
20	17001178	"INS.RAC.1/8" GAS ELECTTROWV2 RYL"	INSECTEUR ROUGE	"BLK EV 1/8" GAS CONNECTOR V2 INSE"	"INS.RAC.1/8" GAS ELECTTROWV2 RYL"
21	17001909	"GUARN.RAC.1/8" GAS ELECTTROWV2 RY"	CONNECTEUR ROUGE	"RED EV CONNECTOR 1/8" GAS SEAL V2"	"GUARN.RAC.1/8" GAS ELECTTROWV2 RY"
22	11027334	"RAC.1/8" GAS ELECTTROWV2 RYL OT/IT"	"RAC.1/8" GAS ELECTTROWV2 RYL OT/IT"	"RAC.1/8" GAS ELECTTROWV2 RYL OT/IT"	"RAC.1/8" GAS ELECTTROWV2 RYL OT/IT"
23	11024469	E.V. ODE 2 VIE 21JNIR4V20-X031	RACCORD 90°	RACCORD 90°	RAC.90° CALD.SIL.TELATO AURA OT/IL
24	17001262	LFBRESS 2W.EV 21JNIR4V20-X031	ELECTROVANNE 2 VOIES	LFBRESS 2W.EV 21JNIR4V20-X031	LFBRESS 2W.EV 21JNIR4V20-X031
25	U043.012	VITE TCB TORX 20 M4X6 ZN-B	VIS TCB TORX 20 M4X6 ZN-B	Senkschraube TCB TORX 20 M4X6 ZN	VITE TCB TORX 20 M4X6 ZN-B
26	17000168	BLACK ELECTROV/CONNECTOR SUPPRY	SUPPELETTORV/RAC.3VOIE NOIR	BLACK ELECTROV/CONNECTOR SUPPRY	SUPPELETTORV/RAC.3VIE RYL NER.
27	17001908	AS.RAC.4V OT+VALV.SIC.5.5-7 B.V3	ENS. VALVES 4 VOIES	BRASS 4WAYS CONNECT+SAFETY VALVE	AS.RAC.4V OT+VALV.SIC.5.5-7 B.V3
28	11031414	AS.ELETTROVALVOLE V3 RYL/T OT/ITE	ENS.BLOC ELECTROVANNE 3 VOIES 24	TEA/BRASS ELECTROV3 24V RYL/T	AS.ELETTROVALVOLE V3 RYL/T OT/ITE
29	128310521	ROSETTA UNI 8842 A5 INOX	RONDELLE	Unterlegscheibe A5:3 DIN 6798 In	ROSETTA UNI 8842 A5 INOX
30	11003555	VITE TCEI AUTOFILET.4.8X32 ZINC	VIS TCEI AUTOFILET.4.8X32 ZINC	Schraube 4.8 x 32 selbstschneide	VITE TCEI AUTOFILET.4.8X32 ZINC
31	11000750	RAC.FAST LOCK DIR.TUBO SIL.RETIN	ADAPTEUR DE LIAISON TUBE	Raccord zu Adapter P124	RAC.FAST LOCK DIR.TUBO SIL.RETIN
32	140328059	OR.2015 SILICONE PTFE/FDA	JOINT OR 2015 SILICONE ROUGE	O-RING 2015 SILIKON	OR.2015 SILICONE PTFE/FDA
33	17000156	SUPP.PERNO PASS.ACC.CALDA RYL NE	SUPPORT PIVOT	BLACK HOT WATER PIN SUPPORT RYL	SUPP.PERNO PASS.ACC.CALDA RYL NE
34	11026413	TAPPO PERNO PASS.ACC.CALDA RYL O	BOUCHON PIVOT	TEA/BRASS HOT WATER PIN PLUG RYL	TAPPO PERNO PASS.ACC.CALDA RYL O
35	140326662	OR ORM 0040-20 SILICONE	JOINT OR 0040-20 SILICONE	OR ORM 0040-20 SILICONE	OR ORM 0040-20 SILICONE
36	9011.144	FORCELLA X TUBO D=4 INOX	AGRAFE TUYAU	Fixierhülse zu Boiler messing	FORCELLA X TUBO D=4 INOX
37	11009012	BOCC.PERNO CALD OT/TEA	BAGUE LAITON	Feder Ventili L=10	BOCC.PERNO CALD OT/TEA
38	11009013	PERNO X PISTONCINO L=10 OT/TEA	RESSORT POUR EPINGLE	FEDER VENTILISTUTZEN	PERNO X PISTONCINO L=10 OT/TEA
39	9011.132	MOLLA PISTONCINO INOX	ENS PISTON	FEDER VENTILISTUTZEN	MOLLA PISTONCINO INOX
40	11009019	AS.PISTONCINO C/GOLA L=20.9 OT/IT	PIPETTE CHAUDIERE	VENTILSTIFT + DICHTUNG VITON	AS.PISTONCINO C/GOLA L=20.9 OT/IT
41	9161.434	PERNO PASS.ACQUA CALDA	CURSEUR DE CHAUDIERE P119	Ventilzapfen MA-RD	PERNO PASS.ACQUA CALDA
42	11005099	CURSORE CALD.V2 P119 PEEK NAT.	JOINT OR ORM 50-20	GLEITSTÜCK AUSLAUFSTUTZEN	CURSORE CALD.V2 P119 PEEK NAT.
43	NM01.035	OR ORM 0090-20 SILICONE	JOINT OR ORM 50-20	O-RING ORM 0090-20 SILICON	OR ORM 0090-20 SILICONE
44	NM01.057	OR ORM 0050-20 SILICONE	JOINT OR ORM 50-20	O-RING ORM 0050-20 SILICON	OR ORM 0050-20 SILICONE
45	11025744	AS.PERNO PASS.ACC.CALDA RYL OT/IT	ENS.PIVOT PASSAGE EAU CHAUDE	TEA/BRASS HOT WATER PIN RYL ASSY	AS.PERNO PASS.ACC.CALDA RYL OT/IT

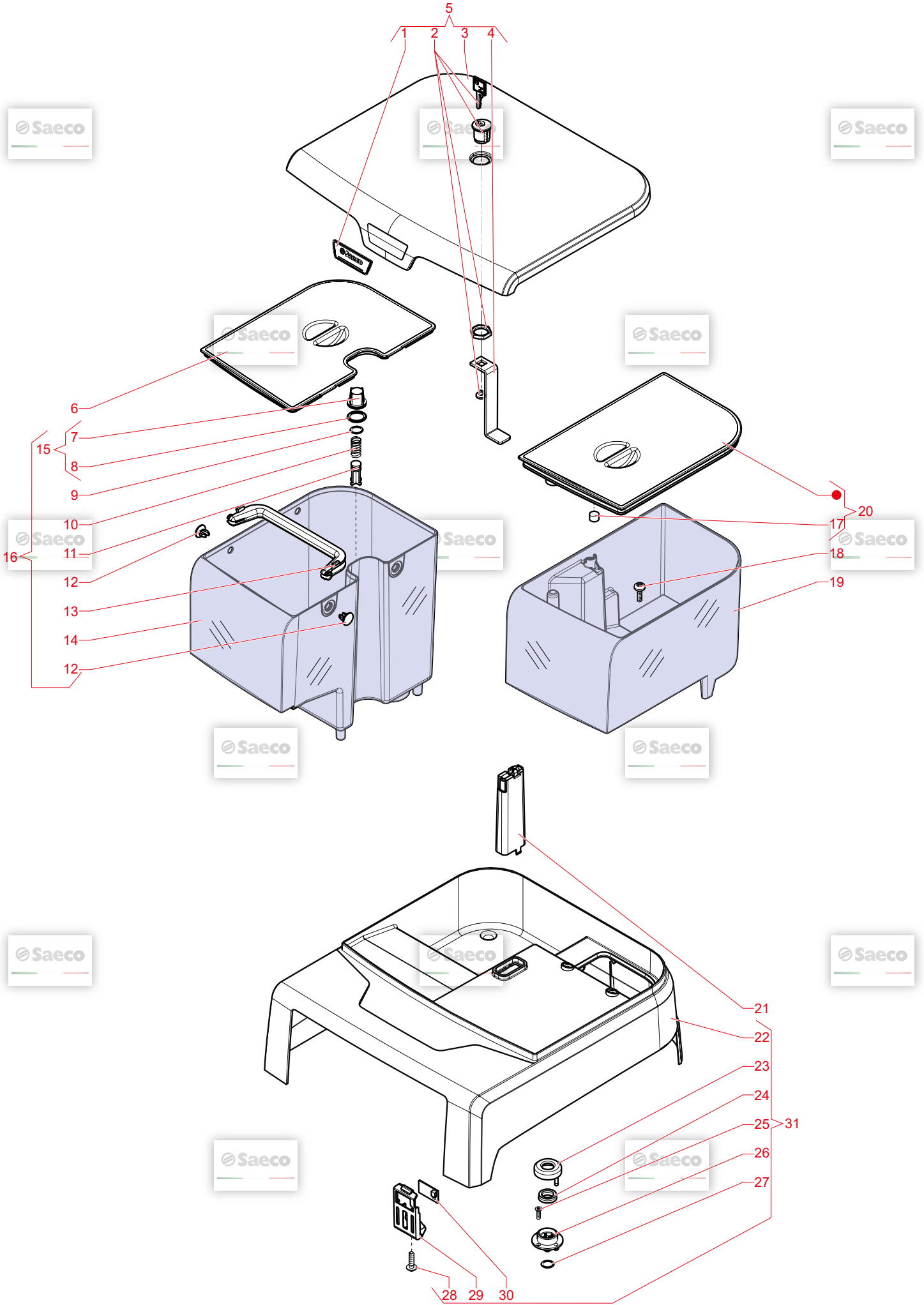


N.POSI	COD	I - DESCRIZIONE	UK - DESCRIPTION	F - DESCRIPTION	D - BEZEICHNUNG	E - DESCRIPCION
1	11027788	TUBO SIL.RETIN.5X8.9 L=2000MM RO	PINK 5X8.9 SILICONE TUBE L=2000MM	TUBO SIL.RETIN.5X8.9 L=2000MM RO	TUBO SIL.RETIN.5X8.9 L=2000MM RO	TUBO SIL.RETIN.5X8.9 L=2000MM RO
2	17800203	AS.CONN.2P.POMPA VAP RYL UL	2POLES CONNECTOR STEAM PUMP RYL	CONNECTEUR 2 POLES POMPE UL	2POLES CONNECTOR STEAM PUMP RYL	AS.CONN.2P.POMPA VAP RYL UL
3	18432020	MOLLA STRINGITUBO D=9.5MM ZINC.G	SPRING HOSE CLAMP D=9.5MM	ATTACHE DE TUYAU D=9.5	Schlauchklemme Pumpenwinkel	MOLLA STRINGITUBO D=9.5MM ZINC.G
4	11029554	SUPPPOMPA UL.KA.MF.SBD/NER.	BLACK/SBD ULKA MF PUMP SUPPORT	SUPPORT POMPE ULKA	BLACK/SBD ULKA MF PUMP SUPPORT	SUPPPOMPA UL.KA.MF.SBD/NER.
5	12001212	POMPA ULKA.MF.230V-50HZ	ULKA PUMP MF 230V-50HZ	POMPE ULKA MF 230V-50HZ	Ulka-Pumpe MF 230V-50HZ klein	POMPA ULKA.MF.230V-50HZ
6	11034678	AS.SUPP.COMPONENTI V3 RYLO 230V	COMPONENTS SUPPV3 230V RYLO ASS	GEN.TURBINE RYL/T ASSY.	GEN.TURBINE RYL/T ASSY.	GEN.TURBINE RYL/T ASSY.
7	11025709	AS.GEN.TURBINA RYL/T	GEN.TURBINE RYL/T ASSY.	RAC. A 90° POMPA ULKA.MF	90° Anschlußgummi Pumpe	RAC.INGRESSO A 90° POMPA ULKA.MF
8	11012193	RAC.INGRESSO A 90° POMPA ULKA.MF	90° INLET CONNECTOR FOR PUMP ULK	SILICONE TUBE 5X10 L.2000MM	Siliconschlauch 5x10 L.2000MM	TUBO SILICONE 5X10 TRASP. L.2000
9	11035450	TUBO SILICONE 5X10 TRASP. L.2000	SILICONE TUBE 5X10 L.2000MM	RACCORD EN TE D=8mm	"Verleierstück" Kunststoff	RAC.T.D=8 ART.80.26.047 KA.461 T
10	147920300	RAC.T.D=8 ART.80.26.047 KA.461 T	TRANS.CONNECTOR D=8 ART.80.26.04	TURBINE D=1.2 ASSY.	TURBINE D=1.2	AS.TURBINA D=1.2
11	NV99.099	AS.TURBINA D=1.2	TURBINE D=1.2 ASSY.	FILTRE D'ASPIRATION	Abdeckung zu Klemmfeder	FILTRO ASPIRAZ.MDS BIA/TRASP.
12	12001595	FILTRO ASPIRAZ.MDS BIA/TRASP.	BLK PROTECTION FOR FOLK SPRING T	PROTECTION DE TUBE	FEDER IN SCHLAUCH	PROTEZ.MOLLA A.FORCELLA.TUBO D=4
13	147756562	PROTEZ.MOLLA A.FORCELLA.TUBO D=4	SPRING FOR TUBE PRODUCT 1	RESSORT POUR TUBE PRODUIT 1		MOLLA X.TUBO.PRODOTTO 1
14	0701.081	MOLLA X.TUBO.PRODOTTO 1	6P.CONN.FLOWMETER V3 RYL UL ASSY	CONNECTEUR 6 POLES		
15	421946001551	AS.CONN.6P.TURBINA V3 RYL UL	6P.CONN.FLOWMETER V3 RYL UL ASSY	CONNECTEUR 2 POLES POMPE CAFE		6P.CONN.FLOWMETER V3 RYL UL ASSY
16	17800202	AS.CONN.2P.POMPA CAF RYL UL	2POLES CONNECTOR COFFEE PUMP RYL	RACCORD 90° CAOUTCHOUC		AS.CONN.2P.POMPA CAF RYL UL
17	147920150	RAC.INGRESSO A 90° POMPA NEU.	90° INLET PUMP CONNECTOR	SUPPORT POMPE NOIR GMYB		RAC.INGRESSO A 90° POMPA NEU.
18	11022857	SUPPPOMPA GMYB NER.	BLACK PUMP SUPPORT GMYB	POMPE ULKA EP5FMGW 230V-50HZ		SUPPPOMPA GMYB NER.
19	421941305991	POMPA ULKA EP5FMGW 230V-50HZ	ULKA PUMP EP5FMGW 230V-50HZ	POMPE ULKA EP5FMGW 230V-50HZ		ULKA PUMP EP5FMGW 230V-50HZ
20	12000892	FASCETTA OETIKER D=9.5 16700004	OETIKER CLAMP D=9.5 16700004	AGRAFES OETIKER D=9.5 16700004		FASCETTA OETIKER D=9.5 16700004
21	11001054	RAC.90° USCITA POMPA P0049/B NER	BLK PUMP OUTLET 90°CONNECTOR P00	RACCORD 90° SORTIE DE POMPE		RAC.90° USCITA POMPA P0049/B NER
22	140321961	OR.2031 TERMOIL	O-RING 2031 TERMOIL	JOINT 2031		OR.2031 TERMOIL
23	12000450	VITE.TC.BR.3.5X12 PLAST.ZN-N	SCREW.TC.BR TORX 10.3.5X12 PLAST.	VIS.TC.BR TORX 10.3.5X12 PLAST.ZN		VITE.TC.BR.3.5X12 PLAST.ZN-N
24	NE03.038	INT.BIPOL.FUSIT C1250AR	BIPOLAR SWITCH FUSIT C1250AR	INTERRUPTEUR BIPOLAIRE		INT.BIPOL.FUSIT C1250AR
25	12001883	PRESA A VASCH.C/SMUSSI V3 EN 603	CUP SOCKET V3 EN 60320 C 13	SOCLE DE PRISE		PRESA A VASCH.C/SMUSSI V3 EN 603
26	17000162	SUPPPRESA E INTERRUT.RYL NER.	BLACK SOCKET-SWITCH SUPPORT RYL	SUPPORT PRISE INTERRUPTEUR		SUPPPRESA E INTERRUT.RYL NER.
27	11025741	AS.TUBI.SCARICO EV/VALV.RYL	VALVE/EV DRAIN TUBES RYL ASSY.			AS.TUBI.SCARICO EV/VALV.RYL
28	11025742	AS.VALV.SCARICO V3 RYL.230V	BLOWDOWN VALVE V3 RYL.230V ASSY.	ENS.ELECTROVANNE V3 230V		AS.VALV.SCARICO V3 RYL.230V
29	11001513	GUARNIZ.A.MEMBRANA VALV.SCARICO	BLOWDOWN VALVE MEMBRANE SEAL P00	GUARNIZ.A.MEMBRANA VALV.SCARICO		GUARNIZ.A.MEMBRANA VALV.SCARICO
30	17800442	AS.CONN.2P.SENS REED FONDI CST	2POLES CONNECTOR SENSOR REED DUMP	CONNECTEUR 2 POLES		2POLES CONNECT.SENSOR REED DUMP
31	17000165	PROT.VASCA REC.ACQ.RYL NER.	BLACK DRIP TRAY PROTECTION RYL	PROTECTION BAC REC.UPEAU		PROT.VASCA REC.ACQ.RYL NER.
32	129913902	VITE.TCB.3X12 PLAST.ZN-B	SCREW.TCB TORX 10.3X12 PLAST.ZN-	VIS.TCB 3X12 PLAST.ZN-B		VITE.TCB.3X12 PLAST.ZN-B
33	11027095	AS.TUBI.SCARICO EV/CONT.ACQ.RYL	WATER CONTAINER/EV DRAIN TUBES R			AS.TUBI.SCARICO EV/CONT.ACQ.RYL
34	11025743	AS.PROT+VALV.SCARICO RYL/T NER/2	230V/BLK PROT+BLOWDOWN VALVE RYL	AS.PROT+VALV.SCARICO RYL/T NER/2		AS.PROT+VALV.SCARICO RYL/T NER/2
35	17000073	SUPP.COMPONENTI RYLO NER.	BLACK COMPONENTS SUPPORT RYLO	SUPPORT DE COMPOSANT NOIR		SUPP.COMPONENTI RYLO NER.
36	421941294291	AS.CONN.IEG PRESA VASCHET.V2 RYL	IEC CONNECTOR V2 RYL ASSY.			AS.CONN.IEG PRESA VASCHET.V2 RYL

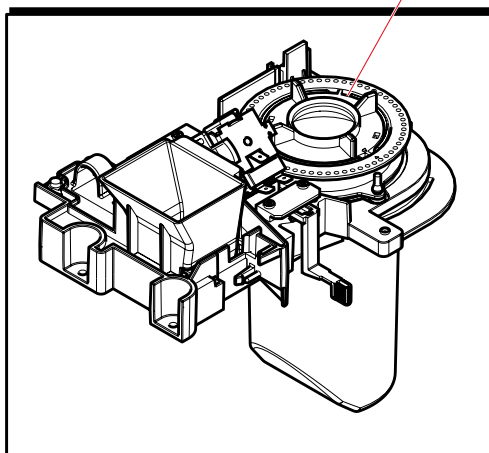
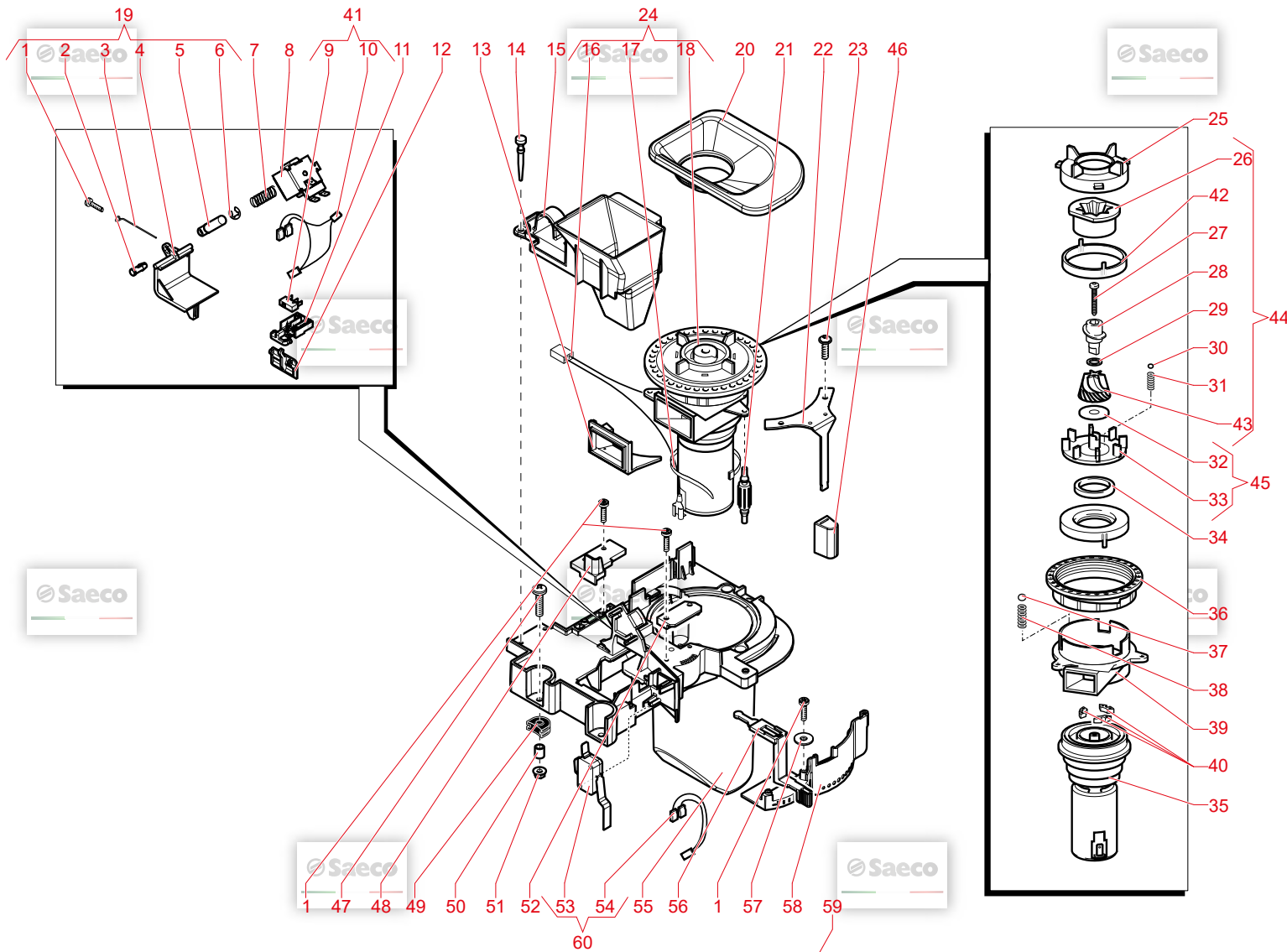
NOTE Saeco 230V 230V



N.POSI	COD	I - DESCRIZIONE	UK - DESCRIPTION	F - DESCRIPTION	D - BEZEICHNUNG	E - DESCRIPCION	NOTE
1	11027788	TUBO SIL.RETIN.5X8.9 L=2000MM RO	PINK 5X8.9 SILICONE TUBE L=2000MM	TUBO SIL.RETIN.5X8.9 L=2000MM RO	TUBO SIL.RETIN.5X8.9 L=2000MM RO	TUBO SIL.RETIN.5X8.9 L=2000MM RO	
2	11035450	TUBO SILICONE 5X10 TRASP. L.2000	SILICONE TUBE 5X10 L.2000MM	SILICONE TUBE 5X10 L.2000MM	SILICONE TUBE 5X10 L.2000MM	TUBO SILICONE 5X10 TRASP. L.2000	
3	12000892	FASCETTA OETIKER D=9.5 16700004	OETIKER CLAMP D=9.5 16700004	AGRAFES OETIKER D=9.5 16700004	OETTINGERKLEIMME D=9.5	FASCETTA OETIKER D=9.5 16700004	
4	17001018	RAC.RI RYLO RI NER.	BLACK WATER SUPPLY CONNECTOR RYL	RACCORD	RACCORD	RAC.RI RYLO RI NER.	
5	11032467	TUBO SILICONE 11X12.8 L=2000 MM	SILICONE TUBE 11X12.8 L.2000 MM	TUBO SILICONE 11X12.8	Siliconschlauch 11X12.8 l=2mt.	TUBO SILICONE 11X12.8 L=2000 MM	
6	11010243	RAC.90°DOPPIO ATTC.SILIC.RETIN.	TEA/BRASS 90° DOUBLE CONNECTOR	RACCORD DOUBLE 90°	Doppelseitig 90° Anschluss Siliko	TEA/BRASS 90° DOUBLE CONNECTOR	
7	11006304	"RAC.DIR.1/8" G./FRESCA CALD.AL.OT"	TEA/BRASS CONNECTOR FOR ALUM.BOI	"RACCORD LATON 1/8"	"Raccord gerade 1/8" Boiler messi"	"RAC.DIR.1/8" G./FRESCA CALD.AL.OT"	
8	9181.406	RAC.TURBINA MF 1/4 1/8 OT/TEA	TEA/BRASS CONNECTOR TURBINE MF 1	RACCORD TURBINE MF 1/4 1/8 TEA	"RACCORD ZU TURBINE MF 1/4" 1/8"	RAC.TURBINA MF 1/4 1/8 OT/TEA	
9	NM01.049	OR ORM 0070-20 SILICONE	OR ORM 0070-20 SILICONE	JOINT OR ORM.0070-20	O-Ring ORM.0070-20	OR ORM 0070-20 SILICONE	
10	N99.033	TURBINA IN PLASTICA	TURBINE IN PLASTIC	TURBINETTE PLASTIQUE	Turbine o.Reduzieraccord	TURBINA IN PLASTICA	
11	17000821	SUPP.TURBINA RYLO NER.	BLACK TURBINE SUPPORT RYLO	SUPPORT DEBIMETRE	BLACK TURBINE SUPPORT RYLO	BLACK TURBINE SUPPORT RYLO	
12	U109.011	VITE AUT.TCB 3.9X9.5 DIN 7981 C	screw AUT.TCB 3.9X9.5 DIN 7981 C	VIS TCB3.9X9.5DIN7981CNIK	Blechschraube 3.9x9.5	VITE AUT.TCB 3.9X9.5 DIN 7981 C	
13	0701.081	MOLLA X TUBO.PRODOTTO 1	SPRING FOR TUBE PRODUCT 1	RESSORT POUR TUBE PRODUIT 1	FEDER IN SCHLAUCH	MOLLA X TUBO PRODOTTO 1	
14	147756662	PROTEZ.MOLLA.A.FORCELLA TUBO D=4	BLK PROTECTION FOR FOLK SPRING T	PROTECTION DE TUBE	Abdeckung zu Klemmfeder	PROTEZ.MOLLA.A.FORCELLA TUBO D=4	
15	12001595	FILTRO ASPIRAZ.MDS BIA/TRASP.	TRANS/WHITE ASPIRATION FILTER M	FILTRE D'ASPIRATION	Ansaugfilter MDS weiß/transparen	FILTRO ASPIRAZ.MDS BIA/TRASP.	
16	11025871	AS.GEN.TURBINA RYLO	GEN.TURBINE RYLO ASSY.	GEN.TURBINE RYLO ASSY.			
17	421946001561	AS.CONN.2P.POMPA V2 RYLO UL	6P CONN.FLOWMETER V2 RYLO UL ASS	CONNECTEUR 6 POLES DEBIT METRE		6P.CONN.FLOWMETER V2 RYLO UL ASS	
18	17800203	AS.CONN.2P.POMPA VAP RYL UL	2POLES CONNECTOR STEAM PUMP RYL	CONNECTEUR 2 POLES POMPE UL		AS.CONN.2P.POMPA VAP RYL UL	
19	184320200	MOLLA STRINGITUBO D=9.5MM ZINC.G	SPRING HOSE CLAMP D=9.5MM	ATTACHE DE TUYAU D.9.5	Schlauchklemme Pumpenwinkel	MOLLA STRINGITUBO D=9.5MM ZINC.G	
20	11029554	SUPP.POMPA ULKA MF SBD/NER.	BLACK/SBD ULKA MF PUMP SUPPORT	SUPPORT POMPE ULKA	ULKA/SBD ULKA MF PUMP SUPPORT	SUPP.POMPA ULKA MF SBD/NER.	
21	12001212	POMPA ULKA MF 230V-50HZ	ULKA PUMP MF 230V-50HZ	POMPE ULKA MF 230V-50HZ	Ulka-Pumpe MF 230V-50HZ klein	POMPA ULKA MF 230V-50HZ	
22	9181.350	"RACC.POST.1/8" POMPA ULKA OT/TEA"	"TEA/BRASS REAR CONNECTOR 1/8" UL"	"RACCORD POST.1/8"	"RACCORD POST.1/8"	"TEA/BRASS REAR CONNECTOR 1/8" UL"	
23	NM03.017	OR R6 NBR	O-RING R6 NBR	JOINT OR R6 NBR	O-Ring R6 NBR	OR R6 NBR	
24	9071.054	DADO RACC.POST.POMPA ULKA OT.	BRASS NUT FOR ULKA PUMP REAR CON	ECROU ARRIERE POMPE ULKA	Mutter zu Raccord	DADO RACC.POST.POMPA ULKA OT.	
25	11022857	SUPP.POMPA GMYB NER.	BLACK PUMP SUPPORT GMYB	SUPPORT POMPE NOIR GMYB	Support Pumpe	SUPP.POMPA GMYB NER.	
26	NE03.038	INT.BIPOL.FUSIT C1250AR	BIPOLAR SWITCH FUSIT C1250AR	INTERRUPTEUR BIPOLAIRE	Schalter Ein/Aus MA-RD	INT.BIPOL.FUSIT C1250AR	
27	12001883	PRESA A VASCH.C/SMUSSI V3 EN 603	CUP SOCKET V3 EN 60320 C.13	SOCLE DE PRISE	CUP SOCKET V3 EN 60320 C.13	PRESA A VASCH.C/SMUSSI V3 EN 603	
28	17000182	SUPP.PRESA E INTERRUIT.RYL NER.	BLACK SOCKET-SWITCH SUPPORT RYL	SUPPORT PRISE INTERRUPEUR	Support Stecker und Schalter sch	SUPP.PRESA E INTERRUIT.RYL NER.	
29	11001054	RAC.90° USCITA POMPA P0049/B NER	BLK PUMP OUTLET 90° CONNECTOR P00	RACCORD 90° SORTIE DE POMPE	Raccord 90° zu Pumpe	RAC.90° USCITA POMPA P0049/B NER	
30	140321961	OR 2031 TERMOIL	O-RING 2031 TERMOIL	JOINT 2031	O-Ring 2031 EPDM	OR 2031 TERMOIL	
31	17800202	AS.CONN.2P.POMPA CAF RYL UL	2POLES CONNECTOR COFFEE PUMP RYL	CONNECTEUR 2 POLES POMPE CAFE		AS.CONN.2P.POMPA CAF RYL UL	
32	17000973	SUPP.COMPONENTI RYLO NER.	BLACK COMPONENTS SUPPORT RYLO	SUPPORT DE COMPOSANT NOIR	BLACK COMPONENTS SUPPORT RYLO	SUPP.COMPONENTI RYLO NER.	
33	421941305991	POMPA ULKA EP5FMGW 230V-50HZ	ULKA PUMP EP5FMGW 230V-50HZ	POMPE ULKA EP5FMGW 230V-50HZ	ULKA PUMP EP5FMGW 230V-50HZ	ULKA PUMP EP5FMGW 230V-50HZ	
34	12000450	VITE TCBR 3.5X12 PLAST.ZN-N	SCREW TCBR TORX 10 3.5X12 PLAST.	VIS TCBR TORX 10 3.5X12 PLASTZN	TORXSCHRAUBE 3.5X12	VITE TCBR 3.5X12 PLAST.ZN-N	
35	9079.A37	"ASS.RACC.POST.1/8" POMPA ULKA NI"	REAR CONN. ASS. M5 FOR ULKA PUMP	IEC CONNECTOR V2 RYL ASSY.	REAR CONN. M5 FOR ULKA PUMP	"ASS.RACC.POST.1/8" POMPA ULKA NI"	
36	421941294291	AS.CONN.IEC PRESA VASCHET.V2 RYL	TRANS.GROSS CONNECTOR D=8 RYLO	CONNECTEUR 2 POLES	TRANS.GROSS CONNECTOR D=8 RYLO	RAC.A.CROCE D=8 RYLO TRASP.	
37	12001812	RAC.A.CROCE D=8 RYLO TRASP.	GUARNIZ.A MEMBRANA VALV.SCARICO	CONNECTEUR 2 POLES	GUARNIZ.A MEMBRANA VALV.SCARICO	RAC.A.CROCE D=8 RYLO TRASP.	
38	11001513	GUARNIZ.A MEMBRANA VALV.SCARICO	BLOWDOWN VALVE MEMBRANE SEAL P00	CONNECTEUR 2 POLES	GUARNIZ.A MEMBRANA VALV.SCARICO	GUARNIZ.A MEMBRANA VALV.SCARICO	
39	178000442	AS.CONN.2P.SENS REED FONDI CST	2POLES CONNECTOR SENSOR REED DUMP	CONNECTEUR 2 POLES	BLACK DRIP TRAY PROTECTION RYL	AS.CONN.2P.SENS REED FONDI CST	
40	17000165	PROT.VASCA REC.ACQ.RYL NER.	BLACK DRIP TRAY PROTECTION RYL	PROTECTION BAC RECUIPEAU	BLACK DRIP TRAY PROTECTION RYL	PROT.VASCA REC.ACQ.RYL NER.	
41	129913902	VITE TCB 3X12 PLAST.ZN-B	SCREW TCB TORX 10 3X12 PLAST.ZN-	VIS TCB 3X12 PLAST.ZN-B	Torx-Schraube 3x12 ZN-B	VITE TCB 3X12 PLAST.ZN-B	
42	147920300	RAC.T D=8 ART.80.26.047 KA.461 T	TRANS.CONNECTOR D=8 ART.80.26.04	RACCORD EN TE D=8mm	"Verteilerstück" Kunststoff	RAC.T D=8 ART.80.26.047 KA.461 T	
43	11030213	AS.TUBI SCARICO EV/VALV.SIC/VALV	SAFETY VALVE/VEV DRAIN TUBES RYLO	ENS ELECTROVANNE V3 230V	BLOWDOWN VALVE V3 RYL 230V ASSY.	AS.TUBI SCARICO EV/VALV.SIC/VALV	
44	11025742	AS.VALV.SCARICO V3 RYL 230V	BLOWDOWN VALVE V3 RYL 230V ASSY.			AS.VALV.SCARICO V3 RYL 230V	
45	11029674	AS.TUBI SCARICO TURB/CONT.ACQ.RY	WATER CONT/TURBINE DRAIN TUBES R			AS.TUBI SCARICO TURB/CONT.ACQ.RY	
46	11030199	AS.PROT+VALV.SCARICO RYLO NER/23	230V/BLK PROT+BLOWDOWN VALVE RYL			AS.PROT+VALV.SCARICO RYLO NER/23	
47	421944023731	AS.SUPP.COMPONENTI V2 RYLO 230V	COMPONENTS SUPP.V2 230V RYLO ASS			AS.SUPP.COMPONENTI V2 RYLO 230V	



N.POSI COD	I - DESCRIZIONE	UK - DESCRIPTION	F - DESCRIPTION	D - BEZEICHNUNG	E - DESCRIPCION
1	11036717 LOGO ADESIVO SAE RYLE	STICKER LOGO SAE RYLE	STICKER LOGO SAE RYLE	STICKER LOGO SAE RYLE	LOGO ADESIVO SAE RYLE
2	12001902 SERRATURA MERONI 337	LOCK MERONI 337	SERRURE MERONI 337	Türschloß Meroni 337	SERRATURA MERONI 337
3	11036751 COP.CONTENITORI RYLE D/AS.	CONTAINERS TOP COVER RYLE TO A	CONTAINERS TOP COVER RYLE TO A	CONTAINERS TOP COVER RYLE TO A	COP.CONTENITORI RYLE D/AS.
4	17001987 STAFFA SERRATURA COP.CONT.RYLO A	STEEL CONTAINERS LID LOCK BRACKE	PLAQUE DE SERRURE POUR COUVERCLE	STEEL CONTAINERS LID LOCK BRACKE	STEEL CONTAINERS LID LOCK BRACKE
5	11036745 AS.COP.CONT.C/SERRATURA RYLE	CONT.COVER W/LOCK RYLE ASSY	CONT.COVER W/LOCK RYLE ASSY	CONT.COVER W/LOCK RYLE ASSY	AS.COP.CONT.C/SERRATURA RYLE
6	11025848 AS.COP.CONT.C/SERRATURA RYLE	BLACK WATER CONTAINER LID RYLO	COUVERCLE BAC EAU NOIR	BLACK WATER CONTAINER LID RYLO	BLACK WATER CONTAINER LID RYLE
7	144650800 FILTRO EST.CONT.ACQ.BIA.	WHITE WATER CONTAINER EXT.FILTER	FILTRE POUR RESERVOIR A EAU	Wasserfilter	FILTRO EST.CONT.ACQ.BIA.
8	140328461 OR ORM 0190-10 EPDM	OR ORM 0190-10 EPDM	JOINT OR 0190-10 EPDM	O-Ring 0190-10 EPDM	OR ORM 0190-10 EPDM
9	140324362 OR ORM 0060-30 SILICONE	OR ORM 0060-30 SILICONE	JOINT DE BAC 0060-30	O-Ring 0060-30 Silicon schwarz	OR ORM 0060-30 SILICONE
10	126764718 MOLLA CILINDR.VALV.CONT.ACQ.INOX	SS WATER CONTAINER VALVE SPRING	RESSORT DE VALVE	Druckfeder zu Wasser tankventil	MOLLA CILINDR.VALV.CONT.ACQ.INOX
11	147660562 PIST.VALV.CONT.ACQ.GRI.	GREY PISTON FOR WATER CONTAINER	PISTON X VALVE BAC EAU	Ventil Wasserbehälter MA. RO. VI	PIST.VALV.CONT.ACQ.GRI.
12	17001255 TAPPO MANIGLIA CONT.ACQ.RYL NER.	BLACK HANDLE WATER CONTAINER LID	BOUCHON POIGNEE BAC EAU	BLACK PLUG FOR WATER CONTAIN HAN	TAPPO MANIGLIA CONT.ACQ.RYL NER.
13	11025847 MANIGLIA CONT.ACQ.RYLO NER.	BLACK HANDLE WATER CONTAINER LID	POIGNEE BAC EAU NOIR	BLACK HANDLE WATER CONTAINER LID	MANIGLIA CONT.ACQ.RYLO NER.
14	11029967 CONT.ACQ.RYLO GRI/TRASP.SER.	TRANSP/GREY WATER CONTAINER S/SC	TRANSP/GREY WATER CONTAINER LID	TRANSP/GREY WATER CONTAINER LID	CONT.ACQ.RYLO GRI/TRASP.SER.
15	224640200 AS.FILTRO EST.CONT.ACQ.BIA.	WHITE WATER CONTAINER EXT.FILTER	ENS. FILTRE EXT.POUR BACS A EAU	SCHMUTZSIEB (MIT POS.25)	AS.FILTRO EST.CONT.ACQ.BIA.
16	11025846 AS.CONT.ACQ.RYLO GRI/TRASP.	TRANSP/GREY WATER CONTAINER RYLO	BAC A EAU COMPLET	TRANSP/GREY WATER CONTAINER RYLO	AS.CONT.ACQ.RYLO GRI/TRASP.
17	11004160 MAGNETE D=6 H=4 COP.CONT.CAF.GRA	D=6 H=4 MAGNET P0049	MAGNETE D=6 H=4 COP.CONT.CAF.GRA	Magnete D=6 H=4 P0049	MAGNETE D=6 H=4 COP.CONT.CAF.GRA
18	12001431 VITE.TCB.3X12.PLAST.INOX	SCREW.TCB.TORX.10.3X12.PLAST.SS	VIS.TCB.3X12.PLAST.INOX	Tox. 10.3x12	VITE.TCB.3X12.PLAST.INOX
19	11025841 CONT.CAF.GRA.RYLO.GRI/TRASP.	TRANSP/GREY BEAN CONTAINER RYLO	BAC CAFE GRAIN	TRANSP/GREY BEAN CONTAINER RYLO	CONT.CAF.GRA.RYLO.GRI/TRASP.
20	11025844 AS.COP.CONT.CAF.GRA.RYLO.NER.	BLACK BEAN COFFEE CONTAIN LID RY	COUVERCLE BAC CAFE NOIR	BLACK BEAN COFFEE CONTAIN LID RY	AS.COP.CONT.CAF.GRA.RYLO.NER.
21	17000829 SUPP.SENS.CONT.CAF.GRA.RYLO.NER.	BLACK BEAN CONTAINER SENSOR SUPP	SUPPORT SENSEUR BAC CAFE RYLO NO	BLACK BEAN CONTAINER SENSOR SUPP	SUPP.SENS.CONT.CAF.GRA.RYLO.NER.
22	11036719 COP.CARC. BLK RYLE	TOP COVER BLK RYLE	SUPPORT SENSEUR BAC CAFE RYLO NO	BLACK BEAN CONTAINER SENSOR SUPP	SUPP.SENS.CONT.CAF.GRA.RYLO.NER.
23	0701.031.150 COP.GUARN.GACO DIM 14 VALV.ACQ.G	GREY WATER VALVE GACO DIM 14 SEA	CACHE JOINT GRIS	Ventil kappe grau	COP.GUARN.GACO DIM 14 VALV.ACQ.G
24	145842900 GUARN.GACO DIM14 VALV.CONT.ACQ.N	NBR WATER CONT.VALVE GACO DIM14	JOINT GACO	Lippendichtung GACO DIM 14	GUARN.GACO DIM14 VALV.CONT.ACQ.N
25	12000895 VITE TSP 3X10 PLAST.INOX	SCREW TSP TORX 10 3X10 PLAST.SS	VIS TSP 3X10 PLAST.INOX	TORXSCHRAUBE 3X10	SCREW TSP TORX 10 3X10 PLAST.SS
26	0701.014.150 CONT.GUARN.GACO DIM 14 VALV.ACQ.	GREY WATER VALVE GACO DIM 14 SEA	SUPPORT JOINT	Ventilunterteil grau	CONT.GUARN.GACO DIM 14 VALV.ACQ.
27	140320461 OR ORM 0080-20 TERMOIL	OR ORM 0080-20 TERMOIL	JOINT DE PIPELITE 0080-20	O-Ring 0080-20 Wassereihlaufstut	OR ORM 0080-20 TERMOIL
28	421841306721 AS.CPU+SW WATER LEVEL SENSOR V3 ASS	CPU+SW WATER LEVEL SENSOR V3 ASS	PLATINE SENSEUR NIVEAU D EAU	CPU+SW WATER LEVEL SENSOR V3 ASS	CPU+SW WATER LEVEL SENSOR V3 ASS
29	17001444 SUPP.SENS.CAPACITIVO LEVEL.ACQ.R	BLACK WATER LEVEL SENSOR SUPPORT	SUPPORT DE CAPTEUR DE NIVEAU D E	BLACK WATER LEVEL SENSOR SUPPORT	SUPP.SENS.CAPACITIVO LEVEL.ACQ.R
30	12000450 VITE.TCBR.3.5X12.PLAST.ZN-N	SCREW.TCBR.TORX.10.3.5X12.PLAST.	VIS.TCBR.TORX.10.3.5X12.PLAST.ZN	TORXSCHRAUBE 3.5X12	VITE.TCBR.3.5X12.PLAST.ZN-N
31	11036744 AS.COP.CARC. RYLE	TOP COVER RYLE ASSY	TOP COVER RYLE ASSY	TOP COVER RYLE ASSY	AS.COP.CARC. RYLE



N.POSI	COD	I - DESCRIZIONE	UK - DESCRIPTION	F - DESCRIPTION	D - BEZEICHNUNG	E - DESCRIPCION	NOTE
1	129913902	VITE TCB 3X12 PLASTZN-B	SCREW TCB TORX 10 3X12 PLASTZN-	VIS TCB 3X12 PLASTZN-B	Torx-Schraube 3x12 ZN-B	VITE TCB 3X12 PLASTZN-B	
2	9161.076.150	PERNO SPORT.DOS.CAF.MAC.GRI.	STEEL GROUND COF.DOSER DOOR PIN	AXE PORTIERE DE DOSEUR	Verschlußbolzen Dosierer MA	PERNO SPORT.DOS.CAF.MAC.GRI.	
3	9161.048	ASTA RASATORE DOS.CAF.MAC.ACC.	STEEL GROUND COF.DOSER SCRAPER R	AGUILLE D'ARASAGE	Feder Dosierklappe MA, VI	ASTA RASATORE DOS.CAF.MAC.ACC.	
4	9161.074.150	SPORT.DOS.CAF.MAC.GRI.	GREY GROUND COFF.DOSER DOOR	PORTE DE DOSEUR	Klappe Dosierer MA, RO, PR	SPORT.DOS.CAF.MAC.GRI.	
5	9161.041	NUCLEO ELETTROM.DOS.CAF.MAC.ACC.	SNAP RING 7 UNI 7434	CONTACT DE BOBINE DOSEUR	Eisenkern 9x40 Dosiermagnetservice	NUCLEO ELETTROM.DOS.CAF.MAC.ACC.	
6	U701.003	ANELLO ELASTICO 7 UNI 7434	SPRING ELECTROM.BEAN DOSER MAGIC	RESSORT D'ELECTRO AIMANT DOS.CAF	Feder zu Elektromagnet	ANELLO ELASTICO 7 UNI 7434	
7	126764818	MOLLA X ELETTROM.DOS.CAF.GRANI MA	DOSER COIL FOR SUPERAUTOM.24V DC	ESSOR BOBINES DOSEUR 24VDC	DOSER COIL FOR SUPERAUTOM.24V DC	MOLLA X ELETTROM.DOS.CAF.GRANI MA	
8	11025734	AS.BOBINA DOSATORE SUPERAUTOM.24	MICROSWITCH	MICRO CONTACT DE MOUTURE	Mikroschalter Dosierer MA, RO	MICROINTERRUTTORE	
9	NE05.017	MICROINTERRUTTORE	4P.CONN.COIL+DOSEUR MICRO V2 RYL	CONNECTION 4 POLES MICRO DOSEUR	4P.CONN.COIL+DOSEUR MICRO V2 RYL	MICROINTERRUTTORE	
10	421946000541	AS.CONN.4P.BOBINA+MICRO DOSAT.V2	GREY CONN.COIL SUPP.CURSOR GROUND CO	SUPPORT MICRO CONTACT	Haltering Dosiermikro MA	CURSOR SUPP.MICRO DOS.CAF.MAC.G	
11	9161.072.150	CURSOR SUPP.MICRO DOS.CAF.MAC.G	GROUND COF.DOSE CONTROL COMPENSA	GROUND COF.DOSE CONTROL COMPENSA	Dichtung Mühle	BILANCERE CONTROL.DOSE CAF.MAC.B	
12	11036568	BILANCERE CONTROL.DOSE CAF.MAC.B	COFFEEGRINDER SEAL	GARNITURE DOSEUR	Gummikupplung	GUARNIZIONE DOSATORE	
13	1505.014	AGGANCI IN GOMMA	RUBBER COUPLER	FIXATION CAOUTCHOUC		AGGANCI IN GOMMA	
14	9161.082	TRAMOGGIA DOSE CAF.MAC.RYL.NER.	BLACK HOPPER FOR POWDER COFFEE R	CONDUIT DOSE CAFE NOIR	BLACK HOPPER FOR POWDER COFFEE R	TRAMOGGIA DOSE CAF.MAC.RYL.NER.	
15	17000176	AS.CON.2POLI MACINACAFFE'EVO	2 POLES CONN.GRINDER MOTOR EVO	COLLIER AUTOSERRANT L=200MM	Kabelbinder, l=200mm	FASCIETTA AUTOBLOC.W=2,6 L=200 B	
16	63A002700	FASCIETTA AUTOBLOC.W=2,6 L=200 B	SELF LOCK STRIP W=2,6 L=200	MOULIN CAFE COMPLET 230 V STD.	Mahlwerkmotor, kopt. 230V MA-RD	AS.MACINACAFFE STD 230V	
17	144320200	AS.MACINACAFFE STD 230V	COFFEE GRINDER STD.230V ASSY.		GREY GROUND COF.DOSER DOOR ASSY.	AS.SPORT.DOS.CAF.MAC.GRI.	
18	9140.036.00A	AS.SPORT.DOS.CAF.MAC.GRI.	GREY GROUND COF.DOSER DOOR ASSY.		COFFEE GRINDER SOUNDPROOFING COV	COP.INSONORIZZAZIONE MC RYL.NER.	
19	9140.017	COP.INSONORIZZAZIONE MC RYL.NER.	JOINT FOR RATIO MOTOR	STEEL GRINDING ADJUSTMENT LEVER	Mahlgradeneinstellhebel ROF	GIUNTO X MOTORIDUTTORE	
20	17000238	GIUNTO X MOTORIDUTTORE	STEEL GRINDING ADJUSTMENT LEVER	STEEL GRINDING ADJUSTMENT LEVER	TORXSCHRAUBE 3,5X12	LEVA REGOL.MACIN.ACC.	
21	9991.013	LEVA REGOL.MACIN.ACC.	SCREW TCB TORX 10 3,5X12 PLAST.	COF.GRIND. STD RYL.EVO 230V AS		VITE TCBR 3,5X12 PLASTZN-N	
22	0333.008	VITE TCBR 3,5X12 PLASTZN-N	COF.GRIND. STD RYL.EVO 230V AS			AS.MACINACAF. STD RYL.EVO 230V	
23	12000450	AS.MACINACAF. STD RYL.EVO 230V	BLACK UPPER GRINDER SUPPORT MAGI	UPPER GRINDER		SUPPORTO MACINA SUPERIORE MAGIC	
24	83A010500	SUPPORTO MACINA SUPERIORE MAGIC	UPPER GRINDER			MACINA SUPERIORE	
25	149186150	MACINA SUPERIORE	TORX SCREW T10 TCB 3,5X40 SX ZNG	BLK INCREASE SCREW PIN COF.GRIND		VITE TORX T10 TCB 3,5X40 SX ZNG	
26	9141.039	VITE TORX T10 TCB 3,5X40 SX ZNG	BLK INCREASE SCREW PIN COF.GRIND			PERNO INCREMENTO A VITE.MC.MAGIC	
27	129931002	PERNO INCREMENTO A VITE.MC.MAGIC	PLAIN WASHER 10X16X0,2DIN 988 G	SPHERE D 5.5		ROSETTA PIANA 10X16X0,2DIN 988 Z	
28	147470763	ROSETTA PIANA 10X16X0,2DIN 988 Z	STAIL STEEL AISI 304 SPHERE D=5.	RESSORT SPHERE D5.5		SFERA D=5,5MM ACCIAIO INOX AISI	
29	U201.002	SFERA D=5,5MM ACCIAIO INOX AISI	SAFETY RING	SAFETY RING		MOLLA ACC.X SFERA D=5,5 MOTORE M	
30	128610521	MOLLA ACC.X SFERA D=5,5 MOTORE M	BLACK LOWER GRINDER SUPPORT MAGI			ANELLO DI SICUREZZA	
31	126765517	ANELLO DI SICUREZZA	FELT RING 40X34X5			SUPPORTO MACINA INFERIORE MAGIC	
32	9141.042	SUPPORTO MACINA INFERIORE MAGIC	SPARE MOTOR UNIT MC 230V			ANELLO IN FELTRO DE=40 DI=34 H=5	
33	9141.080	ANELLO IN FELTRO DE=40 DI=34 H=5	RING NUT FOR GRINDING ADJUSTMENT			MOTORE COMPLETO 230V	
34	140360200	MOTORE COMPLETO 230V	STAIL STEEL AISI 304 SPHERE D=3			GHIERA REGOLAZIONE MACINATURA MAG	
35	0301.R10.00A	GHIERA REGOLAZIONE MACINATURA MAG	NEW SPRING SPHERE D=3.2 MOTOR MA			SFERA D=3,2MM ACCIAIO INOX AISI	
36	146570950	SFERA D=3,2MM ACCIAIO INOX AISI	BLACK COFFEE GRINDER MOTOR SUPPO			MOLLA NEW X SFERA D=3,2 MOTORE M	
37	128610421	MOLLA NEW X SFERA D=3,2 MOTORE M	SHOCK ABS. CONICAL GRINDER SUPP.			AMMORTIZ.X SUPPORTO MACINA CONIC	
38	126770117	AMMORTIZ.X SUPPORTO MACINA CONIC	COIL WIRING+DOSEUR MICRO V2 RYL U			AS.CABL.BOBINA+MICRO DOSAT.V2 RY	
39	9141.080	AS.CABL.BOBINA+MICRO DOSAT.V2 RY	UPPER GRINDER COVER COFFEE GRIND			COPERT X MACINA SUPER.MACINACAF.	
40	421946000921	COPERT X MACINA SUPER.MACINACAF.	CONICAL GRINDER			MACINA CONICA	
41	142844550	MACINA CONICA	KIT ITAL MILL GRINDERS			KIT MACINE ITAL MILL	
42	9141.040	KIT MACINE ITAL MILL	CONICAL GRIND. SUPP. + RING MAGI			SUPPORTO C/ANEL X MACINA CONICA MA	
43	226477700	SUPPORTO C/ANEL X MACINA CONICA MA	BLK GRINDING ADJUST.LEVER HANDGR			IMPUGN.LEVA REGOL.MACIN.ROYAL NE	
44	149186750	IMPUGN.LEVA REGOL.MACIN.ROYAL NE	ZN-B TCB TORX 20 MAX16 ZN-B			VITE TCB TORX 20 MAX16 ZN-B	
45	0333.009	VITE TCB TORX 20 MAX16 ZN-B	GREY COVER FOR DOSEUR HOLE RYL			COP.FORO DOSATORE RYL GRI.	
46	U043.004	COP.FORO DOSATORE RYL GRI.	RUBBER FOR COFFEE GRINDER			GOMMINO X MACINACAFFE	
47	17001185	GOMMINO X MACINACAFFE	SPACER FOR RUBBER			DISTANZIALE X GOMMINO	
48	9991.005	DISTANZIALE X GOMMINO	GREY GROUND COF.DOSER LEVER FIXI			DADO M4 FLANGIATO BASE DENTELLAT	
49	9141.003	DADO M4 FLANGIATO BASE DENTELLAT	MICROSWITCH			MICROINTERRUTTORE	
50	U324.006	MICROINTERRUTTORE	2POL.CONN.MICRO.DOOR RYL UL			AS.CONN.2POL.MICRO.SPOR.RYL UL	
51	9161.097.150	AS.CONN.2POL.MICRO.SPOR.RYL UL	GREY PLATE COFFEEGRINDER MAGIC/R			PIAST.MC.MAGIC/ROYAL GRI.	
52	12001605	PIAST.MC.MAGIC/ROYAL GRI.	DOSE ADJUSTMENT LEVER DE LUXE GR			LEVA X REGOLAZIONE DOSE DE LUXE	
53	11000020	LEVA X REGOLAZIONE DOSE DE LUXE	PLAIN WASHER 3,2X9 DIN 7349 GALV			ROSETTA PIANA 3,2X9 DIN 7349 ZNP	
54	9161.365.150	ROSETTA PIANA 3,2X9 DIN 7349 ZNP	GRY COFFGRINDING/DOSE ADJUST.SC			SCALA REGOL.DOSE E MACIN.CAF.RYL	
55	9161.077.150	SCALA REGOL.DOSE E MACIN.CAF.RYL	PLA COFGRINDING/DOSE ADJUST.SC			AS.GEN.PIAS.MC RYL.EVO 230V	
56	U201.001	AS.GEN.PIAS.MC RYL.EVO 230V	MICRO DOOR RYL UL NVG ASSY			AS.MICRO SPORT.RYL UL NVG	
57	17000832	AS.MICRO SPORT.RYL UL NVG					
58	83A010600						
59	11000023						



Aulika EVO TOP HSC/RI

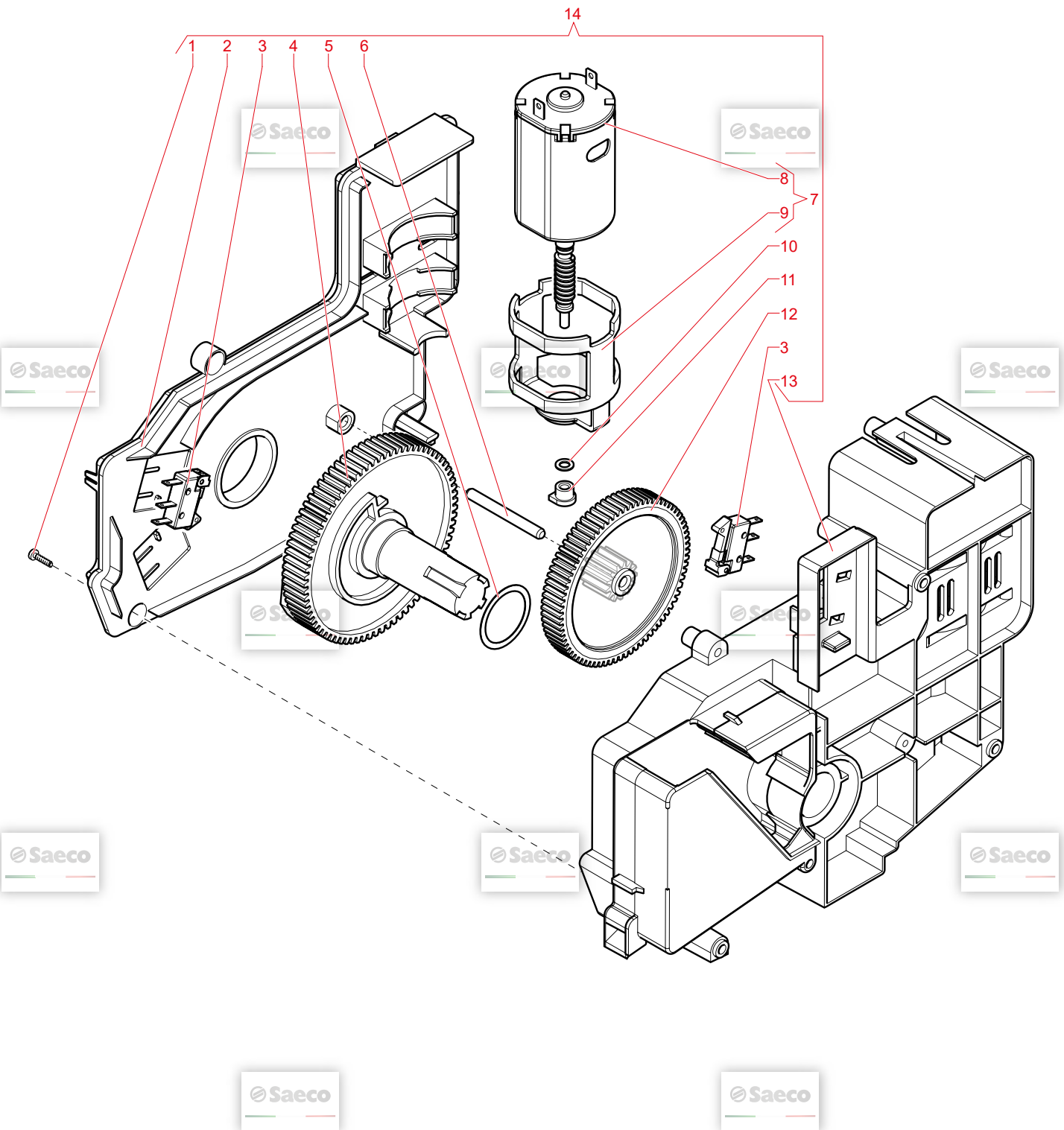
11/02/2019

08

C0103X00

GAGGIO MONTANO

© by Saeco, a company of Evoca Group



N.POSI	COD	I - DESCRIZIONE	UK - DESCRIPTION	F - DESCRIPTION	D - BEZEICHNUNG	E - DESCRIPCION
1	129670202	VITE PANELVIT TCB 3.5X16 TESTA D	TCB PANELVIT SCREW 3.5X16 TESTA	VIS TCB 3.5X16 TESTA D=8 ZNP	Blechschraube ST 3.5X16-Z1-C ver	VITE PANELVIT TCB 3.5X16 TESTA D
2	17000719	COP.MOTORID.RYL GRI.	GREY RATIONOMOTOR LID RYL	MILARD POUR MOTOREDUCTEUR	Deckel Getriebegehäuse grau	COP.MOTORID.RYL GRI.
3	NE05.038	MICROINTERRUTTORE 30V 0.3A	MICROSWITCH 30V 0.3A	MICRO INTERRUPTEUR	MIKROSCHALTER	MICROINTERRUTTORE 30V 0.3A
4	11007137	INGR. Z=77 MOTORID.V2 P124 NER.	BLACK GEAR Z=77 V2 FOR RATIONOMOTO	ENGRENAGE Z=77 MOTORID.V2 P124 N	Zahnrad Z=77 V2 P124 schwarz	INGR. Z=77 MOTORID.V2 P124 NER.
5	9161.368	RONDELLA.MYLAR X MOTORIDUTTORE	MYLAR WASHER FOR RATIONOMOTOR	RONDELLE MOTOREDUCTEUR	UNTERLEGSCHLEIBER GETRIEBEMOTOR	RONDELLA.MYLAR X MOTORIDUTTORE
6	9121.039	PERNO INGR.MOTORID.MAGIC ACC.	STEEL PIN FOR RATIONOMOTOR GEAR MA	STEEL PIN FOR RATIONOMOTOR GEAR MA	STEEL PIN FOR RATIONOMOTOR GEAR MA	PERNO INGR.MOTORID.MAGIC ACC.
7	11005214	AS.MOTORE MOTORIDUTTORE	MOTOR FOR RATIONOMOTOR ASSY.	MOTEUR AVEC CONDENSATEUR	MOTOR GETRIEBE	AS.MOTORE MOTORIDUTTORE
8	11003037	AS.MOTORE MOTORID.C/COND.	MOTOR FOR RATIONOMOTOR ASSY.	MOTEUR REDUCTEUR + CONDENSATEUR	GServiceitemotor.V2 Talea, Ode	AS.MOTORE MOTORID.C/COND.
9	9121.044	ANTIVIBRANTE X MOTORE	ANTIVIBRATION FOR MOTOR	AMORTISSEUR MOTEUR	VIBRATIONSDAEMPFER	ANTIVIBRANTE X MOTORE
10	148380200	RONDELLA.D=5.5 IN TELA BAKELIZZA	BAKELIZZATE WASHER D=5.5	RONDELLE D=5.5	DISTANZSCHEIBE BAKELIT	RONDELLA D=5.5 IN TELA BAKELIZZA
11	9121.046	BOCC.SINTERIZ.MOTORE MOTORID.BRO	BRONZE SINTERED BUSH FOR MOTOR R	JOINT DE MOTEUR	SINTERBUCHSE	BOCC.SINTERIZ.MOTORE MOTORID.BRO
12	146002800	INGR. Z=13/90 MOTORID.P124 GRI.	GREY GEAR Z=13/90 FOR RATIONOMOTOR	ENGRENAGE Z=13/90 MOTOREDUCTEUR	Zahnrad Z=13/90 grau P124	INGR. Z=13/90 MOTORID.P124 GRI.
13	11026258	AS.CARC.MOTORID.C/CANALINO RYL G	GREY RATIONOMOTOR CASING WITH TUBE	CARCASSE MOTOREDUCTEUR AVEC CANA	GEHÄUSE GETRIEBE GRAU	AS.CARC.MOTORID.C/CANALINO RYL G
14	11000032	AS.MOTORID.RYL V3	RATIONOMOTOR RYL V3 ASSY.			

NOTE

Aulika EVO TOP HSC/RI

11/02/2019

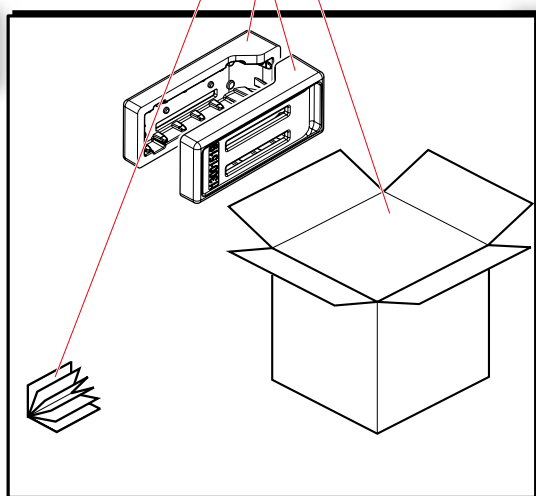
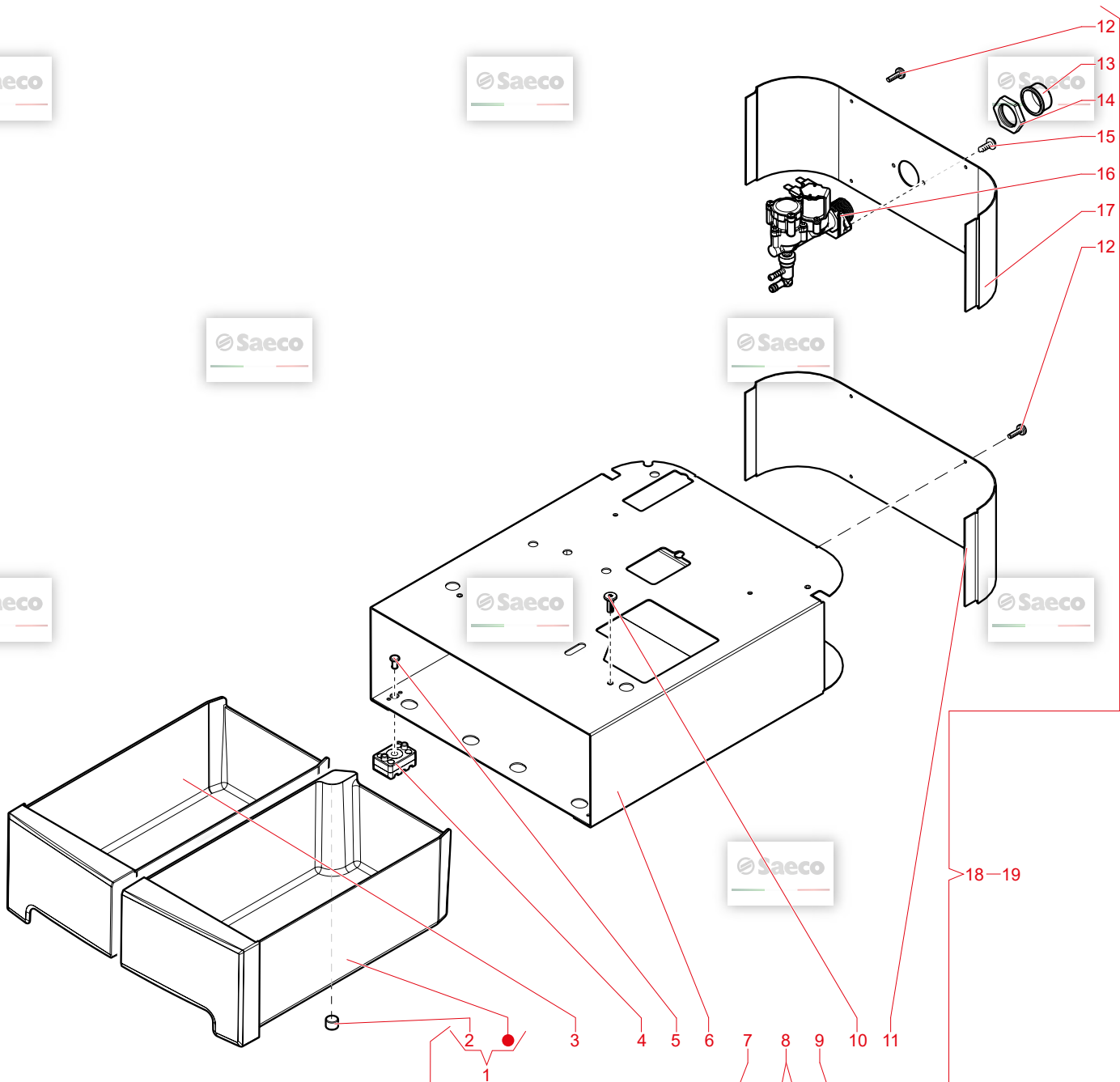
09

C0103X00

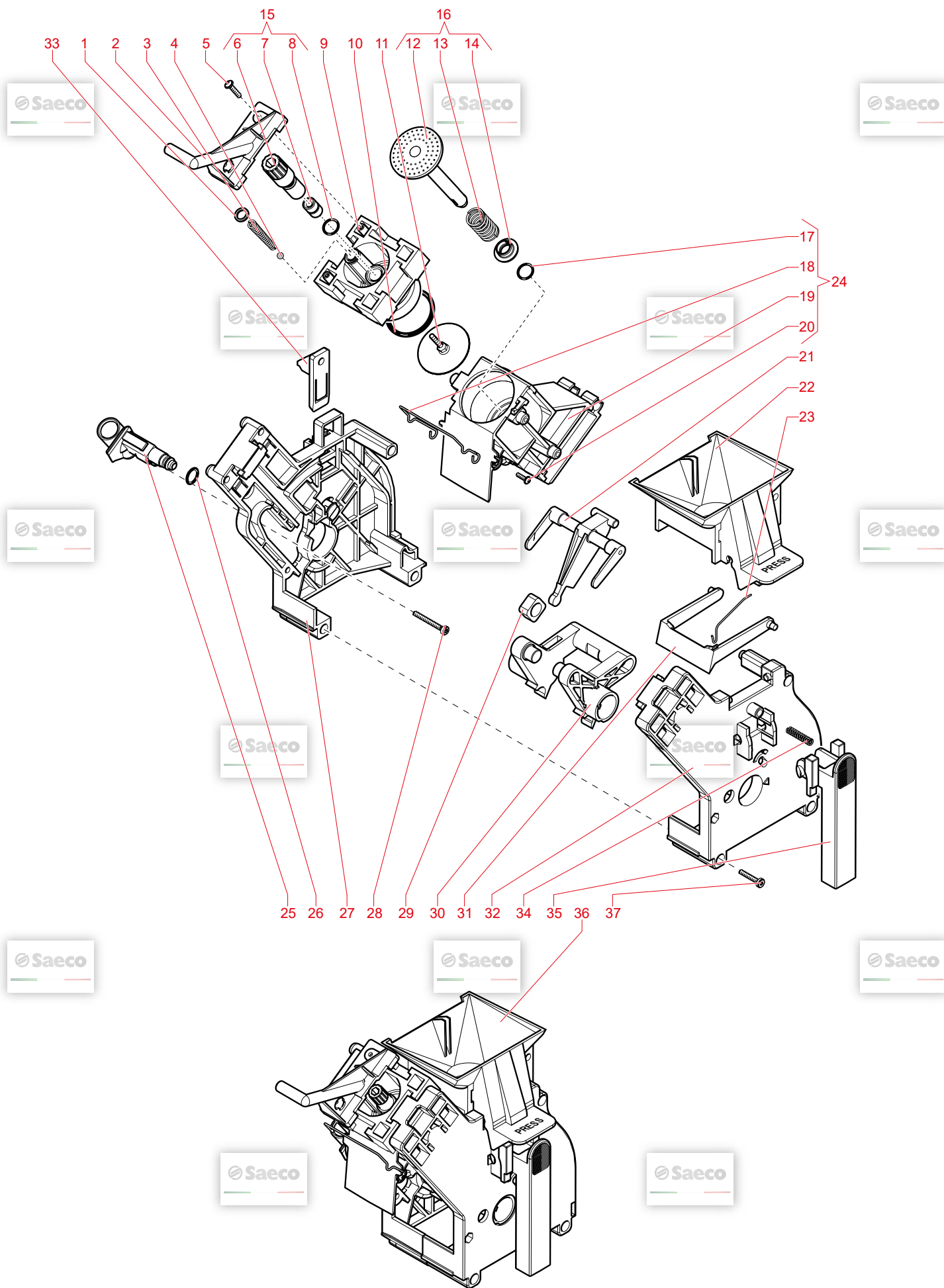
GAGGIO MONTANO

© by Saeco, a company of Evoca Group





N.POSI COD	I - DESCRIZIONE	UK - DESCRIPTION	F - DESCRIPTION	D - BEZEICHNUNG	E - DESCRIPCION
1	11036907 AS.CAS.FONDI BASE RYLO NER.D/VER	UNPAINT.BASE DUMP BOX RYLO ASSY.	FLOTTEUR MAGNETIQUE	MAGNET	MAGNETE X GALLEGGIANTE SUPERAUT.
2	9161.111 MAGNETE X GALLEGGIANTE SUPERAUT.	MAGNET FOR FLOAT SUPERAUT.	PIED RIGIDE	Gehäusefuß	PIEDINO RIGIDO MYB9 NER/TRASP
3	11036905 CAS RIPOSITIGLIO BASE RYLO NER.D/	UNPAINT.BASE REPOSITORY DRAWER R	PIVOT DE FIXATION PIED	Fixierungsmase Gehäusefuß	PERNO FISSAG.PIEDINO RIGIDO MYB9
4	11021829 PIEDINO RIGIDO MYB9 NER/TRASP.	BLACK/TRANSP.RIGID FOOT MYB9	AS.CARC.BASE V2 RYLO ACC.VERN.NE	AS.CARC.BASE V2 RYLO ACC.VERN.NE	AS.CARC.BASE V2 RYLO ACC.VERN.NE
5	421946005111 PERNO FISSAG.PIEDINO RIGIDO MYB9	BLK STEEL BASE CASING V2 RYLO AS	MANUEL INSTALLATION SUP040R RI	MANUAL SAE SUP040R RYLO RI 17LAN	LIB.IST.SAE SUP040R RYLO RI 17L.
6	15003922 LIB.IST.SAE SUP040R RYLO RI 17LAN	MANUAL SAE SUP040R RYLO RI 17LAN	INSERT DE PROTECTION	STYROPOREINSATZ	INS.SCATOLA BASE RYLO PS-E
7	13001519 INS.SCATOLA BASE RYLO PS-E	PS-E INSERT FOR BOX BASE RYLO	CARTON D'EMBALLAGE	HAVANA BOX V2 BASE RYLO	HAVANA BOX V2 BASE RYLO
8	13001676 SCAT.BASE V2 RYLO AVANA	HAVANA BOX V2 BASE RYLO	VIS TORX M 4X10 TESTA D=8X1.5 ZI	TORXSCHRAUBE M4X10	VITE TORX M 4X10 TESTA D=8X1.5 Z
9	129914302 VITE TORX M 4X10 TESTA D=8X1.5 Z	SCREW TORX M4X10 TESTA D=8X1.5 G	BLK BASE REAR PANEL RYLO	BLK BASE REAR PANEL RYLO	BLK BASE REAR PANEL RYLO
10	421944001181 PANNEL.POST.BASE RYLO NER.	BLK BASE REAR PANEL RYLO	VIS TCB3.9X9.5 DIN 7981 C	Blechschraube 3.9x9.5	VITE AUT.TCB 3.9X9.5 DIN 7981 C
11	11091011 VITE AUT.TCB 3.9X9.5 DIN 7981 C	screw AUT.TCB 3.9X9.5 DIN 7981 C	BOUCHON 3/4 KAPSTO 800R 3/4	ABDECKUNG 3/4"	"TAPPO 3/4 ""KAPSTO 800R 3/4""-TAPP"
12	UV03.002 "TAPPO 3/4 ""KAPSTO 800R 3/4""	"CAP 3/4 ""KAPSTO 800R 3/4""	EMBOUT EN NYLON G3/4" 6MM.	"UeBERWUFR G3/4" 6 MM."	"GHIERA IN NYLON G3/4" 6 MM."
13	NV99.075 "NYLON RING NUT G3/4" 6 MM."	"GHIERA IN NYLON G3/4" 6 MM."	VIS TCB TORX 20 4X10 PLASTZN-N	SCHRAUBE 4X10	VITE TCBR 4X10 PLASTZN-N
14	129912104 VITE TCBR 4X10 PLASTZN-N	SCREW TCBR TORX 20 4X10 PLASTZN	ELECTROVANNE ENTREE D'EAU	EINLASSVENTIL	AS.ATTACCO RI RYLO RI
15	17001582 AS.ATTACCO RI RYLO RI	CONNECT.WATER SUPPLY RYLO RI ASS	PANNEAU ARRIERE BASE INFERIEURE/	RÜCKWAND UNTERBAU FW	PANNEL.POST.BASE RYLO RI ACC.VER
16	11029701 PANNEL.POST.BASE RYLO RI ACC.VER	BLACK BASE REAR PANEL RYLO RI	BLK-BLK BASE RYLO/O ASSY.V2	BLK-BLK BASE RYLO/O ASSY.V2	AS.BASE RYLO/O NER-NER V2
17	11036908 AS.BASE RYLO/O NER-NER V2	BLK-BLK BASE RYLO/O ASSY.V2	BASE RYLO EVO TOP RI ASSY		AS.BASE RYLO/O NER-NER V2
18	83A007800 ASSIEME BASE RYLO RI EVO TOP	BASE RYLO EVO TOP RI ASSY			
19					



N.POSI	COD	I - DESCRIZIONE	UK - DESCRIPTION	F - DESCRIPTION	D - BEZEICHNUNG	E - DESCRIPCION
1	11021334	GUARN.DE=11 DI=8 SP=1,4 X CONTRO MANICOT.USCITA CAF.GRUP.ROYAL NE	BLK COUNTERPISTON SEAL DE=11 DI=8 SP=1,4 X CONTRO SLEEVE BREW UN	GARNITURE CONTRE PISTON RACCORD SORTIE CAFE ROYAL	Dichtung DE=11 DI=8 SP=1,4 zu Ko	GUARN.DE=11 DI=8 SP=1,4 X CONTRO
2	11003789	MOLLA CONICA INOX	SS CONICAL SPRING	RESSORT CONIQUE	FEDER ZU CREMAVENTIL	MOLLA CONICA INOX
3	9161.222	SFERA D.5 MM IN BORO SILICATO	BOROSILICATE SPHERE D.5 MM	SPHERE D.5 MM	BOROSILICATE SPHERE D.5 MM	BOROSILICATE SPHERE D.5 MM
4	421944034451	VITE TCB 3X16 TORX 10 PLAST.INOX	SCREW TCB TORX 10 3X16 PLAST SS	SCREW TCB TORX 10 3X16 PLAST SS	SCREW TCB TORX 10 3X16 PLAST SS	VITE TCB 3X16 TORX 10 PLAST.INOX
5	12002170	PERNO X DOCCIA NERO	PIN BLACK FOR PERCOLATOR			
6	147472850	INS.PERNO BLOCCAG.DOCCIA OT.	BRASS INSERT FOR PERCOLATOR LOCK			
7	NF11.067	OR ORM 0060-20 TERMOIL	OR ORM 0060-20 TERMOIL	JOINT ORM 0060-20	O-RING 0060-20	OR ORM 0060-20 TERMOIL
8	140324461	CONTROPIST.GRUP.M5000 NER.	BLACK BREW UNIT COUNTERPISTON M5	CONTREPISTON GROUPE CAFE	Anpresskolben Brühgruppe schwarz	CONTROPIST.GRUP.M5000 NER.
9	11003796	OR ORM 0320-40 SILICONE PTFE/FDA	OR ORM 0320-40 SILICONE PTFE/FDA	JOINT OR 0320-40 SILICONE	O-RING ORM 0320-40	OR ORM 0320-40 SILICONE PTFE/FDA
10	NM01.044	AS.DOCCIA DE=35.8 ELFO C/VITE E	PERCOLATOR DE=35.8 ELFO ASSY.	GRILLE D.35.8	Sieb (geätzt) kpl. mit Stift	AS.DOCCIA DE=35.8 ELFO C/VITE E
11	9160.075	AS.PISTINTEGR.GRUP.8GR.NER.	BLK BRW UNIT INTEGRAL PISTON 8G	PISTON GROUPE CAFE P124 8GR	BRÜHKOLBEN UNTEN	AS.PISTINTEGR.GRUP.8GR.NER.
12	11003077	MOLLA PIST.GRUP.8GR.INOX	SS.8GR.BREW UNIT PISTON SPRING	RESSORT DU PISTON	FEDER ZU KOLBEN	MOLLA PIST.GRUP.8GR.INOX
13	9161.198	BOC.PIST.GRUP.8GR.-12GR.BIA.	WHITE 8GR.-12GR.BREW UNIT PISTON	RONDELLE DE BLOCAGE DU PISTON	ARRETIERHÜLSE	BOC.PIST.GRUP.8GR.-12GR.BIA.
14	9161.191	AS.PERNO X DOCCIA COMPLETEO NERO	PIN BLACK ASS FOR PERCOLATOR	AXE DE GRILLE	Siebhalterung schwarz Brühgruppe	AS.PERNO X DOCCIA COMPLETEO NERO
15	227470150	AS.GEN.PISTONE INTEGR.GRUP.CAF.8	BLK 8GR.BREW UNIT NTEGR.PISTON G	PISTON GROUPE CAFE	BRÜHKOLBEN MIT FEDER+ ARRETIERUN	AS.GEN.PISTONE INTEGR.GRUP.CAF.8
16	11036010	OR ORM 0090-25 TERMOIL	OR ORM 0090-25 TERMOIL	JOINT ORM 0090-25 EPDM	O-Ring ORM 0090-25 EPDM	OR ORM 0090-25 TERMOIL
17	NM02.018	MOLLA RASAT.H=49 GRUP.CAF.SMART	SS BREW UNIT SPRING H=49 SMART	RESSORT RACLEUR	EINRASTFEDER H=49 BG	MOLLA RASAT.H=49 GRUP.CAF.SMART
18	11001556	AS.CONT.CAF.GRUP.8G.P124.NER.	BLK COF.CONTAIN.BREW UNIT V2.M50	CHAMBRE GROUPE CAFE M5000	BLK COF.CONTAIN.BREW UNIT V2 M50	BLK COF.CONTAIN.BREW UNIT V2 M50
19	421944014611	VITE TCBR 3.5X14 PLAST.INOX	SCREW TCB TORX 10 3.5X14 PLAST.	BIELLE NOIRE	SCHRAUBE 3.4X14	VITE TCBR 3.5X14 PLAST.INOX
20	129912521	BIELLA GRUP.8GR.NER.	BLACK CONNECTING ROD BREW UNIT 8	ENTONNOIR GROUPE CAFE M5000	PLEUEL	BIELLA GRUP.8GR.NER.
21	11003078	MOLLA RASAT.H=49 GRUP.CAF.SMART	SS SCRAPER SPRING FOR BREW UNIT	RESSORT D'ARRASAGE	Trichter Brühgruppe schwarz MA,	MOLLA RASAT.H=49 GRUP.CAF.SMART
22	11003795	TRAMOG.GRUP.M5000 NER.SER.PRESS	BLK HOPPER COFF BREW UNIT S/SC		DRUCKFEDER	TRAMOG.GRUP.M5000 NER.SER.PRESS
23	9161.046	MOLLA RASAT.H=49 GRUP.CAF.SMART	SS SCRAPER SPRING FOR BREW UNIT		BOHNEBEHALTER KPLT.SCHWARZ 8 GR	MOLLA RASAT.H=49 GRUP.CAF.SMART
24	11004570	AS.CONT.CAF.GRUP.8G.P124.NER.	BLACK BREW UNIT COFFEE CONT.P124	PIPETTE ENTREE D'EAU	WASSERREINLAUFSTUTZEN BG	AS.CONT.CAF.GRUP.8G.P124.NER.
25	9161.064.050	MANICOT.ENTRATA ACQ.GRUP.ROYAL N	BLACK WATER INLET SLEEVE BREW UN	JOINT 2025 TERMOIL	OR 2025 TERMOIL	MANICOT.ENTRATA ACQ.GRUP.ROYAL N
26	NM02.007	OR 2025 TERMOIL	OR 2025 IN TERMOIL	JOINT 2025 TERMOIL	O-RING 2025 EPDM	OR 2025 TERMOIL
27	421941158532	PIAS.POS.V2 GRUP.M5000 NER.	BLACK BREW UNIT REAR PLATE V2 M5	PLAQUE ARRIERE GROUPE CAFE	BLACK BREW UNIT REAR PLATE V2 M5	BLACK BREW UNIT REAR PLATE V2 M5
28	12000550	VITE.TCB 3X25 PLAST.INOX	SCREW TCB TORX 10 3X25 PLAST.SS	VIS TCB TORX 3x25 Plast.Ss	TORXSCHRAUBE 3X25	VITE.TCB 3X25 PLAST.INOX
29	9161.094.050	BLOC.FORATO GRUP.PANNER.	BLACK BREW UNIT DRILLED BLOCK	ENTRETOISE NOIRE	Gleitstück Brühgruppe schwarz	BLOC.FORATO GRUP.PANNER.
30	9161.066.050	ALBERO A GOMITO GRUP.M5000 NER.	BLACK BREW UNIT ELBOW SHAFT M500	ARBRE DU GROUPE	KURBELWELLE	ALBERO A GOMITO GRUP.M5000 NER.
31	11004161	RASATORE GRUP.M5000 NER.	BLACK SCRAPER FOR BREW UNIT M500	RACLEUR GROUPE	ABS TREIFER	RASATORE GRUP.M5000 NER.
32	11003793	PIAS.ANT.GRUP.M5000 NER.	BLACK BREW UNIT FRONT PLATE M500	PLAQUE ANT. GROUPE M5000 NOIR	Seitentell Brühgruppe rechts MA,	PIAS.ANT.GRUP.M5000 NER.
33	11004114	PIAS.AGGANC.GRUP.NER.	BLACK BREW UNIT COUPLING PLATE	PLAQUE FIXATION DU GROUPE	Verschluss Brühgruppe schwarz MA,	PIAS.AGGANC.GRUP.NER.
34	9161.075	MOLLA IMPUGNAT.GRUP.M5000	SS BREW UNIT HANDGRIP SPRING M50	RESSORT POIGNEE DE GROUPE	Feder Brühgruppenentriegelung MA	MOLLA IMPUGNAT.GRUP.M5000
35	11003791	IMPUGN.GRUP.M5000 NER.	BLACK BREW UNIT HANDGRIP M5000	POIGNEE DU GROUPE	Hebel Brühgruppenentriegelung sc	IMPUGN.GRUP.M5000 NER.
36	11003800	GRUPPO CAFE' NERO	BLACK BREW UNIT	GROUPE CAFE	BRÜHGRUPPE KPLT.	GRUPPO CAFE' NERO
37	12000897	VITE TCB TORX 3.5X20 PLAST.INOX	SCREW TCB TORX 10 3.5X20 PLAST.SS	VIS TCB TORX 10 3.5x20 Plast.Ss	TORXSCHRAUBE 3,5X 20	SCREW TCB TORX 10 3.5X20 PLAST.S



Aulika EVO TOP HSC/RI

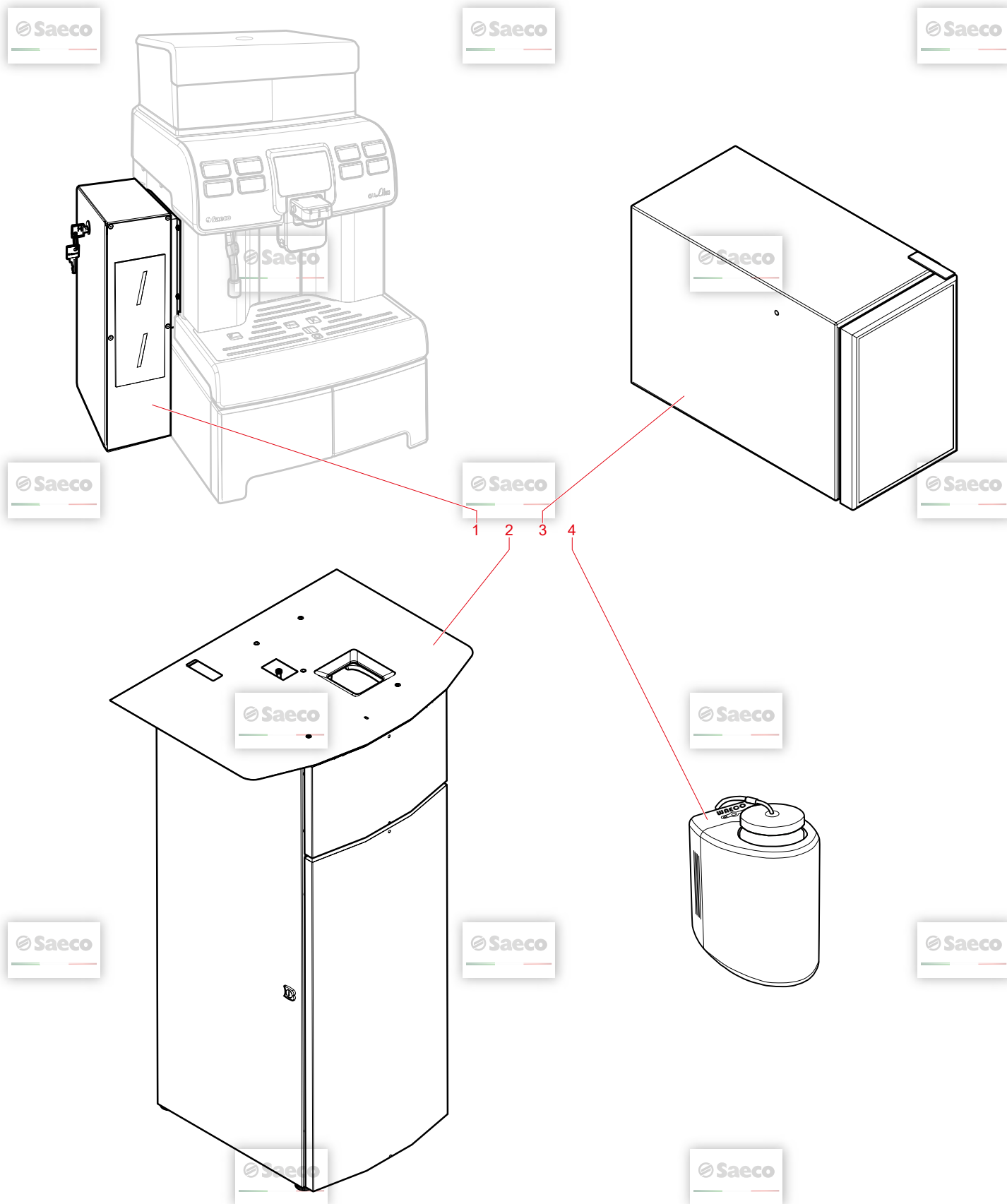
11/02/2019

11

C0103X00

GAGGIO MONTANO

© by Saeco, a company of Evoca Group - GAGGIO MONTANO



N.POSI COD	I - DESCRIZIONE	UK - DESCRIPTION	F - DESCRIPTION	D - BEZEICHNUNG	E - DESCRIPCION
1	21002350 VE KIT BOX PAYM. SYS. AULIKA TOP	VE KIT BOX PAYM. SYS. AULIKA TOP	VE KIT BOX PAYM. SYS. AULIKA TOP	VE KIT BOX PAYM. SYS. AULIKA TOP	VE KIT BOX PAYM. SYS. AULIKA TOP
2	10005004 VE MOBILETTO AULIKA-ROYAL-AMBRA	VE CABINET AULIKA-ROYAL-AMBRA BL	VE MEUBLE AULIKA-ROYAL-AMBRA BLK	Unterschrank AULIKA-ROYAL-AMBRA	VE MOBILETTO AULIKA-ROYAL-AMBRA
3	10005145 ACC FRIDGE FR7L BR9D R600a	FRIDGE FR7L BR9D R600a	FRIDGE FR7L BR9D R600a	FRIDGE FR7L BR9D R600a	ACC FRIDGE FR7L BR9D R600a
4	21001820 ACC PR MANTENITORE 100/240V 50-6	ACC PR MANTENITORE 100/240V 50-6	MILK COOLER 100/240V 50-60HZ BLK	Milchkühler 1L Phebra 100/240V 5	ACC PR MILK KEEPER 100/240V 50-6



Aulika EVO TOP HSC/RI

11/02/2019

12

C0103X00

© by Saeco, a company of Evoca Group - GAGGIO MONTANO





Il Costruttore si riserva il diritto di modificare, senza preavviso, le caratteristiche delle apparecchiature presentate in questa pubblicazione; declina inoltre ogni responsabilità per le eventuali inesattezze imputabili ad errori di stampa e/o trascrizione contenute nella stessa.

Le istruzioni, i disegni, le tabelle e le informazioni in genere contenute nel presente fascicolo sono di natura riservata e non possono essere riprodotte ne completamente ne parzialmente od essere comunicate a terzi senza l'autorizzazione scritta del Costruttore che ne ha la proprietà esclusiva.



The manufacturer reserves the right to modify, without prior notice, the characteristics of the equipment described in this publication; and further declines to accept any responsibility for any inaccuracies contained in this publication which can be ascribed to printing and/or transcription errors.

All instructions, drawings, tables and information contained in this publication are confidential and can neither be reproduced, completely or in part, nor be transmitted to third parties without the written permit of the Manufacturer, who has the sole ownership.

Le fabricant se réserve le droit de modifier, sans préavis, les caractéristiques des appareils présentes dans cette publication; en outre, elle decline toute responsabilité pour d'éventuelles inexactitudes imputables à des erreurs d'impression et/ou de transcription.

Tous droits de reproduction, complète ou partielle, des instructions, des dessins, des tableaux et de toutes les informations contenues dans cette publication sont réservés. Aucune communication à un tiers ne peut être faite sans une autorisation par écrit du Constructeur qui en a la propriété exclusive.

Der Hersteller behält sich das Recht vor, die Eigenschaften der hier beschriebenen Geräte ohne Voranzeige zu ändern und lehnt gleichzeitig jede Verantwortung für mögliche Unrichtigkeiten ab, die auf Druckfehler oder Abschreibfehler zurückzuführen sind.

Alle Anweisungen, Zeichnungen, Tabellen und Informationen, die im allgemeinen im vorliegenden Band enthalten sind, müssen als vertraulich betrachtet werden und können weder teilweise noch vollständig reproduziert bzw an Dritte ohne die schriftliche Ermächtigung des Herstellers weitergegeben werden, der das Alleineigentum besitzt.

El Constructor se reserva el derecho de modificar, sin previo aviso, las características de los aparatos presentados en esta publicación; además declina toda responsabilidad por los eventuales inexactitudes imputables a errores de imprenta y/o transcripción contenidos en la misma.

Las introducciones, los dibujos, las tablas y las informaciones en general contenidos en este fascículo son de tipo reservado y no se pueden reproducir, completamente o en parte, ni comunicar a terceros si la autorización escrita del Fabricante, el cual tiene la propiedad exclusiva.



